

Dell Precision 5510 Owner's Manual

Regulatory Model: P56F
Regulatory Type: P56F001



Notes, cautions, and warnings

 **NOTE:** A NOTE indicates important information that helps you make better use of your computer.

 **CAUTION:** A CAUTION indicates either potential damage to hardware or loss of data and tells you how to avoid the problem.

 **WARNING:** A WARNING indicates a potential for property damage, personal injury, or death.

Copyright © 2015 Dell Inc. All rights reserved. This product is protected by U.S. and international copyright and intellectual property laws. Dell™ and the Dell logo are trademarks of Dell Inc. in the United States and/or other jurisdictions. All other marks and names mentioned herein may be trademarks of their respective companies.

2015 - 10

Rev. A00

Contents

1 Working on your computer.....	5
Before working inside your computer.....	5
Turning off Your Computer.....	6
Using power buttonUsing charms.....	6
After working inside your computer.....	6
2 Removing and installing components.....	8
Recommended Tools.....	8
Removing the Base Cover.....	8
Installing the Base Cover.....	9
Removing the Battery.....	9
Installing the Battery.....	10
Removing the Memory Module(s).....	10
Installing the Memory Module(s).....	10
Removing the Hard Drive.....	11
Installing the Hard Drive.....	12
Removing the Speakers	12
Installing the Speakers.....	13
Removing the WLAN Card.....	13
Installing the WLAN Card.....	14
Removing the Fans	14
Installing the Fans.....	16
Removing the Heatsink.....	16
Installing the Heatsink.....	17
Removing the DC-in Connector.....	17
Installing the DC-in Adapter Port.....	18
Removing the System Board.....	18
Installing the System Board.....	20
Removing the Keyboard.....	20
Installing the Keyboard.....	22
Removing the Display Assembly.....	22
Installing the Display Assembly.....	24
Removing the Solid State Drive (SSD).....	24
Installing the solid-state drive.....	25
3 System Setup.....	27
Boot Sequence.....	27
Navigation keys.....	27


System Setup Options.....	28
Updating the BIOS	32
System and setup password.....	32
Assigning a system password and setup password.....	33
Deleting or changing an existing system and/or setup password.....	33
4 Diagnostics.....	34
Enhanced Pre-Boot System Assessment (ePSA) diagnostics.....	34
Device Status Light.....	35
5 Technical Specifications.....	36
6 Contacting Dell.....	42


Working on your computer


Before working inside your computer


Use the following safety guidelines to help protect your computer from potential damage and to help to ensure your personal safety. Unless otherwise noted, each procedure included in this document assumes that the following conditions exist:


- You have read the safety information that shipped with your computer.
- A component can be replaced or--if purchased separately--installed by performing the removal procedure in reverse order.


 **WARNING:** Before working inside your computer, read the safety information that shipped with your computer. For additional safety best practices information, see the Regulatory Compliance Homepage at www.dell.com/regulatory_compliance

 **CAUTION:** Many repairs may only be done by a certified service technician. You should only perform troubleshooting and simple repairs as authorized in your product documentation, or as directed by the online or telephone service and support team. Damage due to servicing that is not authorized by Dell is not covered by your warranty. Read and follow the safety instructions that came with the product.

 **CAUTION:** To avoid electrostatic discharge, ground yourself by using a wrist grounding strap or by periodically touching an unpainted metal surface, such as a connector on the back of the computer.


 **CAUTION:** Handle components and cards with care. Do not touch the components or contacts on a card. Hold a card by its edges or by its metal mounting bracket. Hold a component such as a processor by its edges, not by its pins.

 **CAUTION:** When you disconnect a cable, pull on its connector or on its pull-tab, not on the cable itself. Some cables have connectors with locking tabs; if you are disconnecting this type of cable, press in on the locking tabs before you disconnect the cable. As you pull connectors apart, keep them evenly aligned to avoid bending any connector pins. Also, before you connect a cable, ensure that both connectors are correctly oriented and aligned.


 **NOTE:** The color of your computer and certain components may appear differently than shown in this document.

To avoid damaging your computer, perform the following steps before you begin working inside the computer.


1. Ensure that your work surface is flat and clean to prevent the computer cover from being scratched.
2. Turn off your computer (see Turning Off Your Computer).
3. If the computer is connected to a docking device (docked) such as the optional Media Base or Battery Slice, undock it.

 **CAUTION:** To disconnect a network cable, first unplug the cable from your computer and then unplug the cable from the network device.

4. Disconnect all network cables from the computer.


5. Disconnect your computer and all attached devices from their electrical outlets.
6. Close the display and turn the computer upside-down on a flat work surface.
 -  **NOTE:** To avoid damaging the system board, you must remove the main battery before you service the computer.
7. Remove the main battery.
8. Turn the computer top-side up.
9. Open the display.
10. Press the power button to ground the system board.

 **CAUTION:** To guard against electrical shock, always unplug your computer from the electrical outlet before opening the display.

 **CAUTION:** Before touching anything inside your computer, ground yourself by touching an unpainted metal surface, such as the metal at the back of the computer. While you work, periodically touch an unpainted metal surface to dissipate static electricity, which could harm internal components.

11. Remove any installed ExpressCards or Smart Cards from the appropriate slots.

Turning off Your Computer

 **CAUTION:** To avoid losing data, save and close all open files and exit all open programs before you turn off your computer.



You can turn off your computer in two ways :

1. Using the power button
2. Using the charms menu

Using power button


1. Press and hold the **Power** button  to turn off the screen.

Using charms


1. Swipe from the right edge of the display to access the **Charms** menu.
2. Touch **Settings**  → **Power**  → **Shut down** to turn off the computer.

After working inside your computer

After you complete any replacement procedure, ensure you connect any external devices, cards, and cables before turning on your computer.

 **CAUTION:** To avoid damage to the computer, use only the battery designed for this particular Dell computer. Do not use batteries designed for other Dell computers.

1. Connect any external devices, such as a port replicator, battery slice, or media base, and replace any cards, such as an ExpressCard.
2. Connect any telephone or network cables to your computer.

 **CAUTION: To connect a network cable, first plug the cable into the network device and then plug it into the computer.**

3. Replace the battery.
4. Connect your computer and all attached devices to their electrical outlets.
5. Turn on your computer.

Removing and installing components

This section provides detailed information on how to remove or install the components from your computer.


Recommended Tools

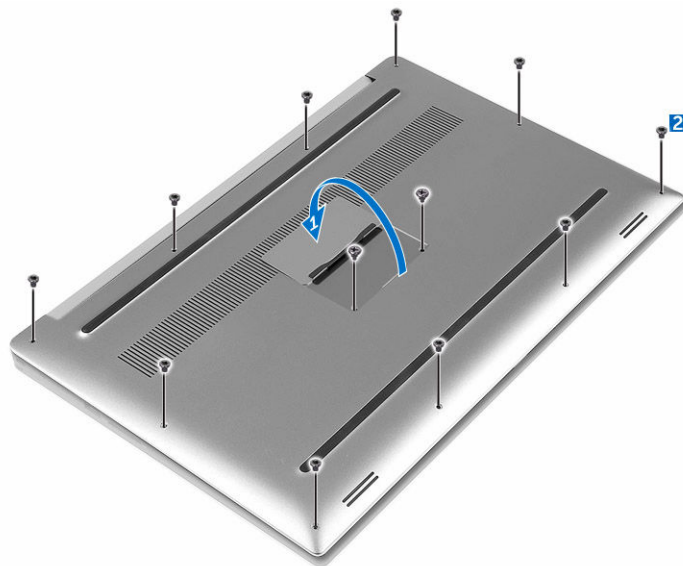
The procedures in this document may require the following tools:

- Small flat-blade screwdriver
- #0 Phillips screwdriver
- #1 Phillips screwdriver
- T5 Torx screwdriver
- Small plastic scribe

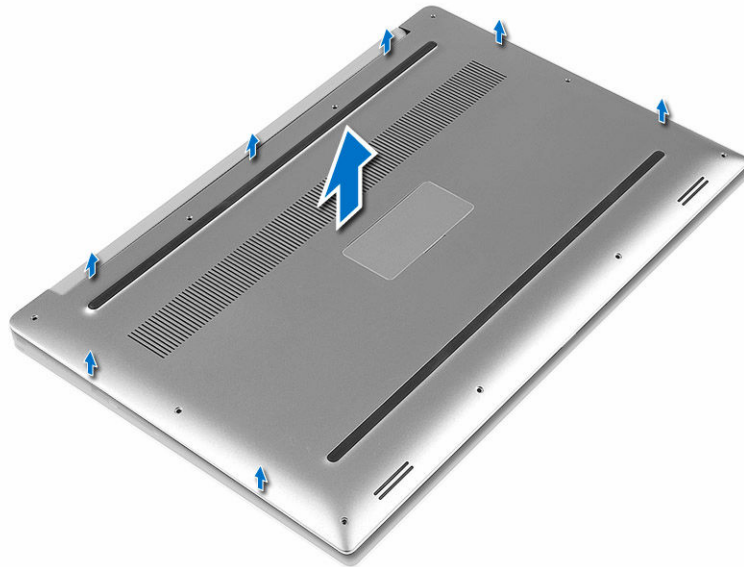
Removing the Base Cover

1. Follow the procedures in *Before Working Inside Your Computer*.
2. Close the display and turn the computer over.
3. Turn the system badge flap over (1) and then remove the screws that secure the base cover to the computer (2).

 **NOTE:** Use a Torx #5 screwdriver for the base screws and a Philips screwdriver for the screws inside the badge flap.




4. Release and remove the base cover from the computer.



Installing the Base Cover

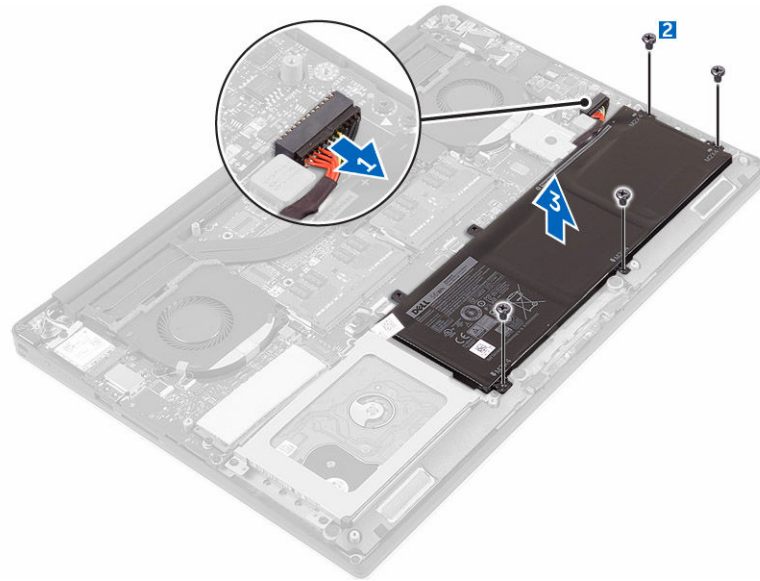
1. Place the base cover on the computer and snap it in place.
2. Tighten the screws to secure the base cover to the computer.

 **NOTE:** Ensure you use a Torx #5 screwdriver for the base screws and a Philips screwdriver for the system badge screws.

3. Turn the system badge flap over and snap it in place.
4. Follow the procedures in *After Working Inside Your Computer*.

Removing the Battery

1. Follow the procedures in [Before Working Inside Your Computer](#).
2. Remove the [base cover](#).
3. Perform the following steps to remove the battery:
 - a. Disconnect the battery cable from the system board [1].
 - b. Remove the screws that secure the battery to the computer [2].
 - c. Lift the battery off the computer [3].

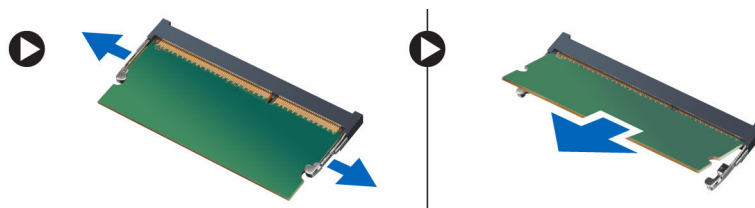


Installing the Battery

1. Place and align the battery in the battery bay.
2. Tighten the screws that secure the battery to the computer.
3. Connect the battery cable to the system board.
4. Install the base cover.
5. Follow the procedures in *After Working Inside Your Computer*.


Removing the Memory Module(s)

1. Follow the procedures in [Before Working Inside Your Computer](#).
2. Remove the:
 - a. [base cover](#)
 - b. [battery](#)
3. Pry the securing clips away from the memory module until it pops-up. Remove the memory module from its connector on the system board.



Installing the Memory Module(s)

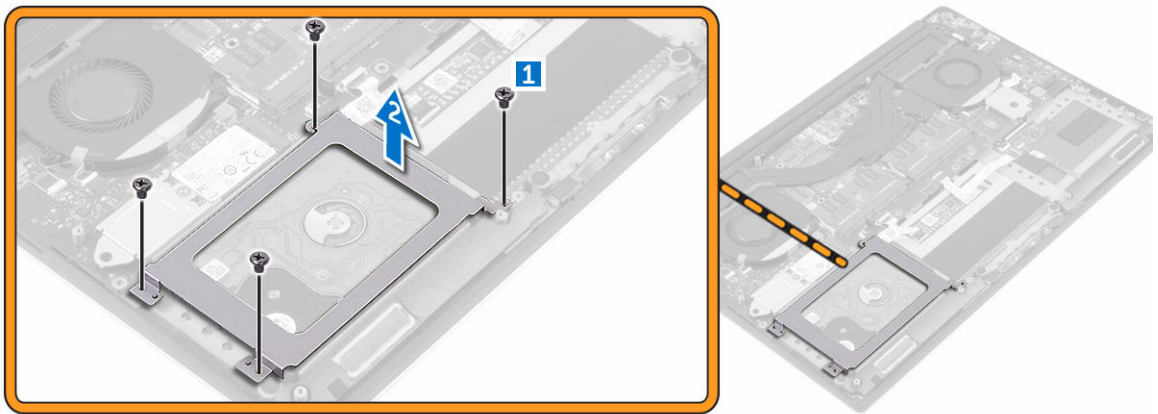
1. Insert the memory module into the memory socket.
2. Press the memory module down until it clicks into place.

 **NOTE:** If you do not hear the click, remove the memory module and re-install it.

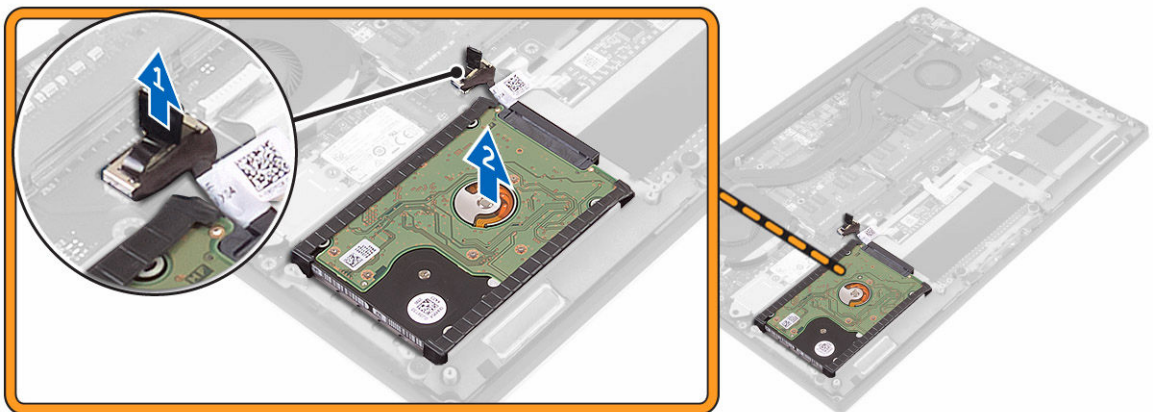
3. Install the:
 - a. battery
 - b. base cover
4. Follow the procedures in *After Working Inside Your Computer*.

Removing the Hard Drive

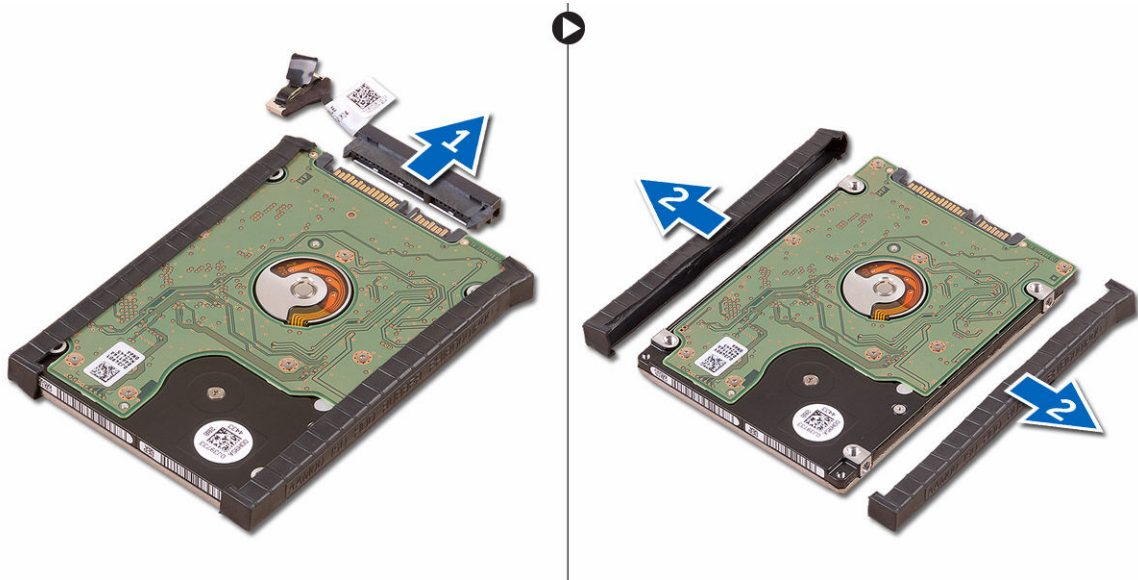
1. Follow the procedures in [Before Working Inside Your Computer](#).
2. Remove the:
 - a. [base cover](#)
 - b. [battery](#)
3. Perform the following steps to remove the hard-drive bracket from the computer:
 - a. Remove the screws securing the hard-drive bracket to the computer [1].
 - b. Lift the hard-drive bracket off the computer [2].



4. Perform the following steps to remove the hard-drive:
 - a. Disconnect the hard-drive cable from the system board [1].
 - b. Lift the hard drive off the computer [2].



5. Remove the data-cable connector [1] and then slide out the two end brackets [2].

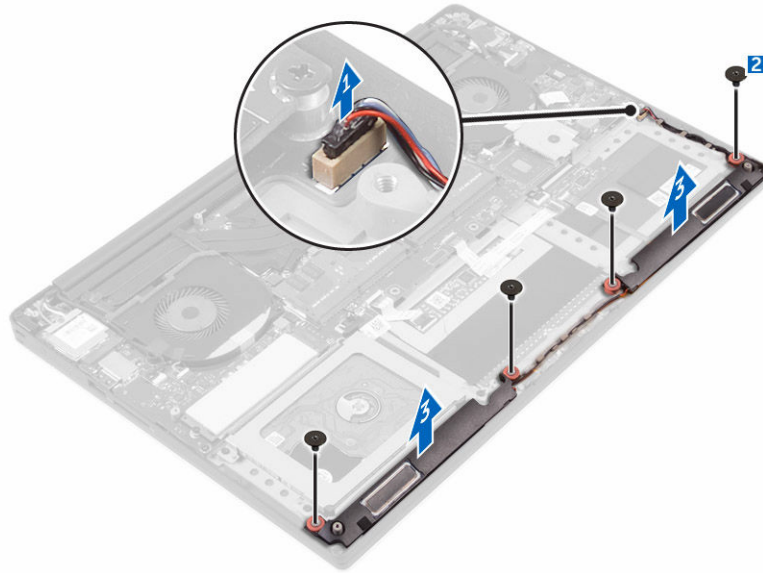


Installing the Hard Drive

1. Replace the hard-drive covers on the hard drive.
2. Connect the hard-drive interposer to the hard-drive assembly.
3. Place the hard-drive assembly on the palm-rest assembly.
4. Connect the hard-drive cable to the system board.
5. Align the screw holes on the hard-drive cage with the screw holes on the hard-drive assembly.
6. Replace the screws that secure the hard-drive cage to the palm-rest assembly.
7. Install the:
 - a. battery
 - b. base cover
8. Follow the procedures in *After Working Inside Your Computer*.

Removing the Speakers

1. Follow the procedures in [Before Working Inside Your Computer](#).
2. Remove the:
 - a. [base cover](#)
 - b. [battery](#)
3. Perform the following steps to remove the speaker:
 - a. Disconnect the speaker cable from the system board [1].
 - b. Remove the screws that secure the speakers to the computer [2].
 - c. Lift the speakers, along with the speaker cable, off the computer [3].

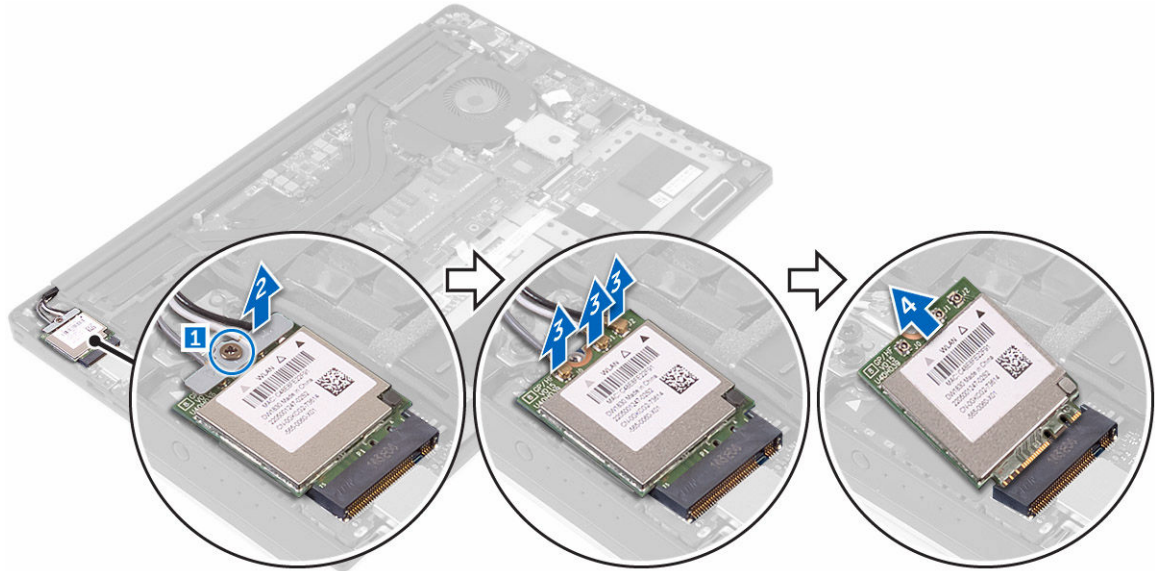


Installing the Speakers

1. Using the alignment posts, place the speakers on the palm-rest assembly.
2. Replace the screws that secure the speakers to the palm-rest assembly.
3. Route the speaker cables through the routing guides on the palm-rest assembly.
4. Connect the speaker cable to the system board.
5. Install the:
 - a. battery
 - b. base cover
6. Follow the procedures in *After Working Inside Your Computer*.

Removing the WLAN Card

1. Follow the procedures in [Before Working Inside Your Computer](#).
2. Remove the:
 - a. [base cover](#)
 - b. [battery](#)
3. Perform the following steps to remove the WLAN card:
 - a. Remove the screw to release the bracket that secures the WLAN card to the computer [1] and lift the bracket away from the computer [2].
 - b. Disconnect the antenna cables from the WLAN card [3].
 - c. Slide and remove the WLAN card from its connector on the board [4].



Installing the WLAN Card

1. Align the notch on the WLAN card with the tab on the WLAN-card connector on the I/O board.
2. Align the bracket which secures the WLAN card to the palmrest assembly.
3. Connect the antenna cables to the WLAN card.

CAUTION: To avoid damage to the WLAN card, do not place any cables under it.

NOTE: The color of the antenna cables is visible near the tip of the cables. The antenna-cable color scheme for the WLAN card supported by your computer is as follows:

Table 1. Antenna-Cable Color Scheme for the WLAN Card

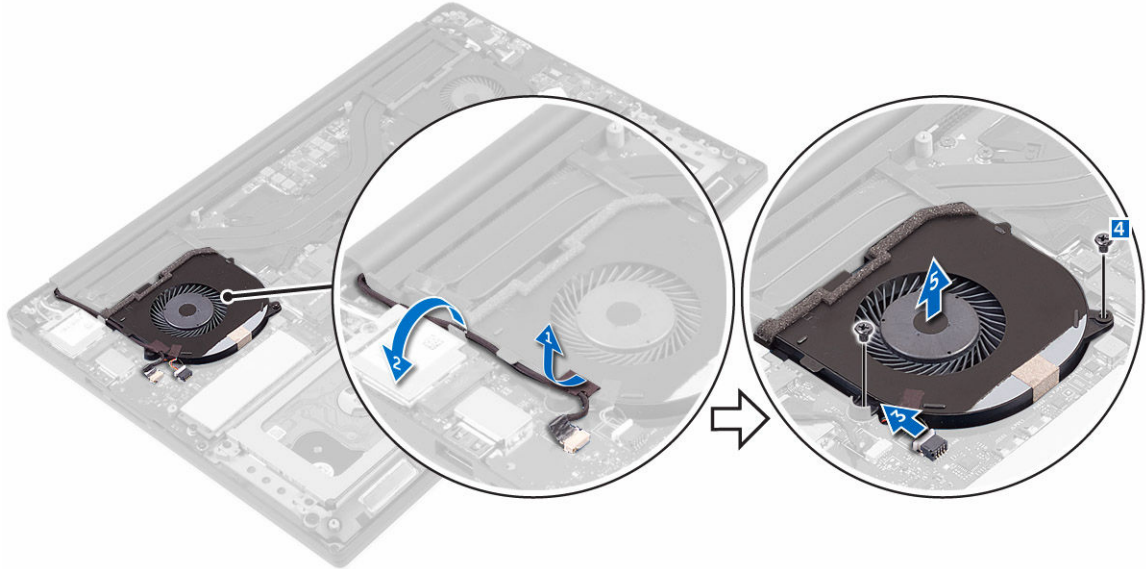
Connectors on the WLAN card	Antenna-cable color
Main (white triangle)	white
Auxiliary (black triangle)	black
Multiple input, multiple output (grey triangle)	Grey (optional)

4. Tighten the screw to secure the bracket and the WLAN card to the palmrest assembly.
5. Install the:
 - a. battery
 - b. base cover
6. Follow the procedures in *After Working Inside Your Computer*.

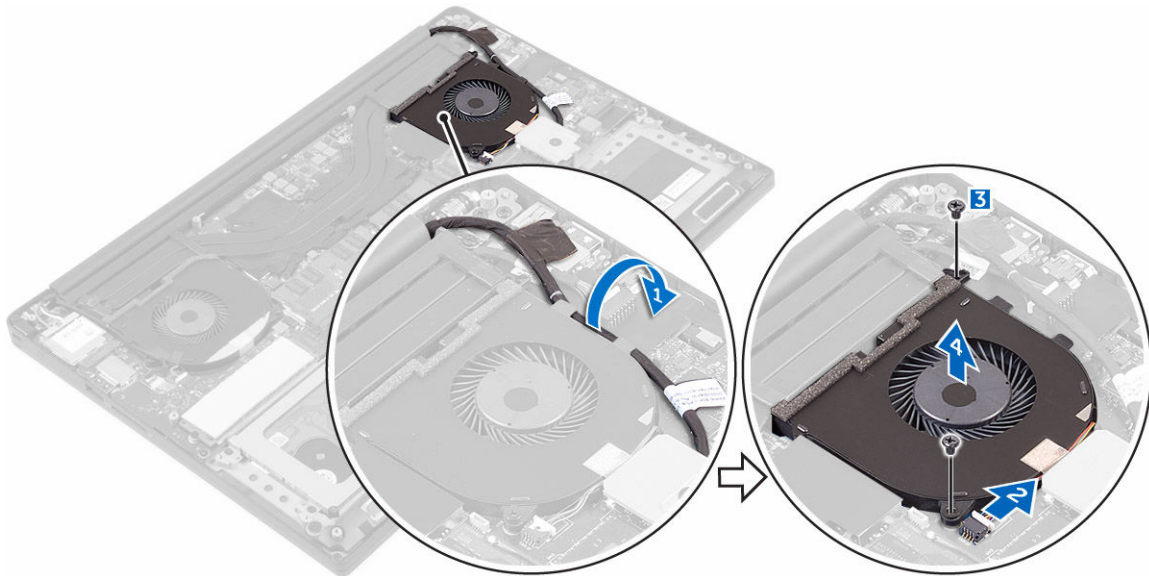
Removing the Fans

1. Follow the procedures in [Before Working Inside Your Computer](#).
2. Remove the:
 - a. [base cover](#)
 - b. [battery](#)

3. Perform the following steps to remove the left video-card fan:
- Un-thread the LVDS cable from its restraints [1] and [2].
 - Disconnect the fan cable from the system board [3].
 - Remove the screws that secure the fan to the computer [4].
 - Lift the fan away from the computer [5].



4. Perform the following steps to remove the right system fan:
- Un-thread the LVDS cable from its restraints [1].
 - Disconnect the fan cable from the system board [2].
 - Remove the screws that secure the fan to the computer [3].
 - Lift the fan away from the computer [4].

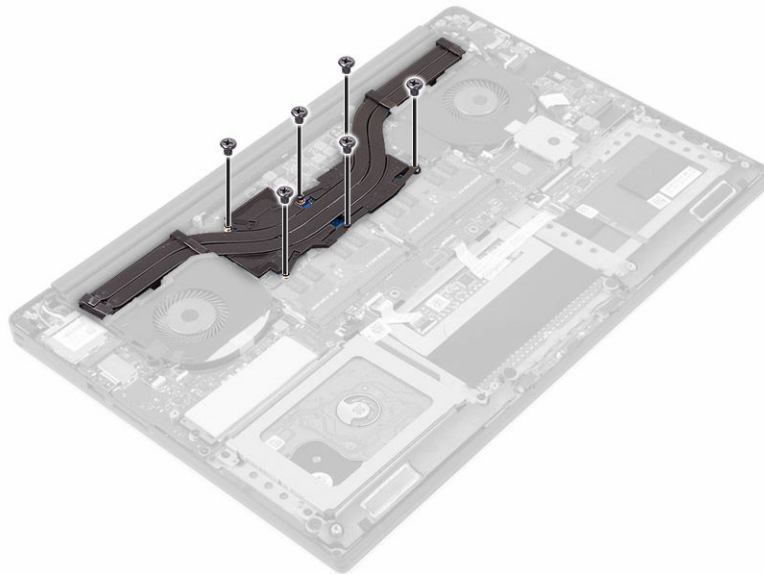


Installing the Fans

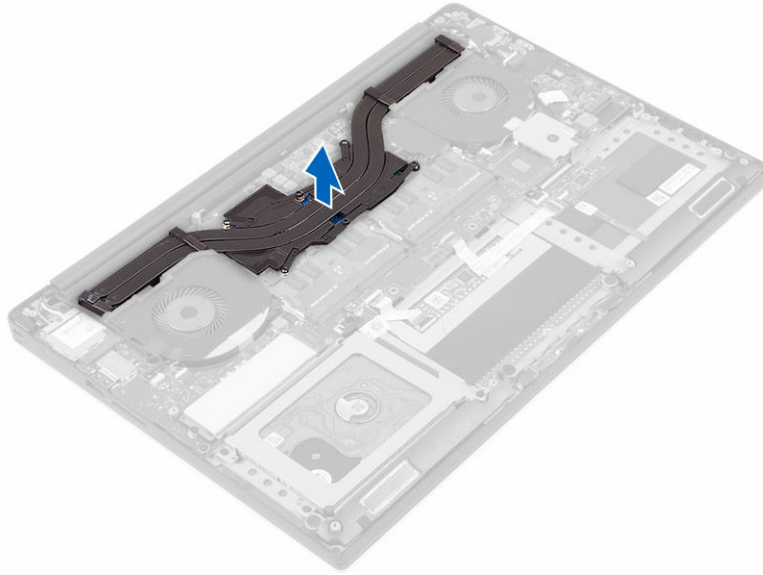
1. Perform the following steps to install the system fan:
 - a. Align the screw holes on the left fan with the screw holes on the palm-rest assembly.
 - b. Connect the left fan cable to the system board.
 - c. Route the display cable through the routing guides on the left fan.
 - d. Replace the screws that secure the left fan to the system board.
 - e. Connect the right fan cable to the system board.
 - f. Route the touch-screen cable through the routing guides on the right fan.
 - g. Adhere the tape that secures the touch-screen cable to the right fan.
 - h. Connect the display cable to the system board.
 - i. Replace the screws that secure the right fan to the system board.
2. Follow the procedures in *After Working Inside Your Computer*.

Removing the Heatsink

1. Follow the procedures in [Before Working Inside Your Computer](#).
2. Remove the:
 - a. [base cover](#)
 - b. [battery](#)
3. Remove the screws that secure the heatsink to the system board.



4. Lift the heatsink off the computer.

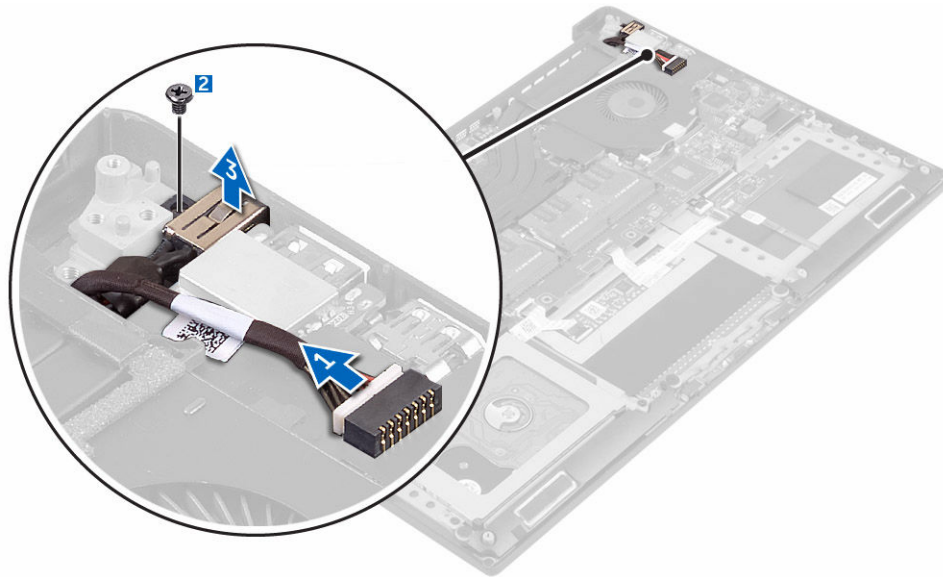


Installing the Heatsink

1. Align the screw holes on the heatsink with the screw holes on the system board.
2. Replace the screws to secure the heatsink to the system board.
3. Install the:
 - a. battery
 - b. base cover
4. Follow the procedures in *After Working Inside Your Computer*.

Removing the DC-in Connector

1. Follow the procedures in [Before Working Inside Your Computer](#).
2. Remove the:
 - a. [base cover](#)
 - b. [battery](#)
3. Perform the following steps to remove the I/O board:
 - a. Disconnect the DC-in cable from the system board [1].
 - b. Remove the screw that secures the DC-in cable to the computer.
 - c. Remove the DC-in connector from the computer.





Installing the DC-in Adapter Port

1. Place the DC-in adapter port into the slot on the palm-rest assembly.
2. Route the power-adapter port cable through its routing guides on the palm-rest assembly.
3. Replace the screw that secures the power-adapter port to the palm-rest assembly.
4. Connect the power-adapter port cable to the system board.
5. Install the:
 - a. battery
 - b. base cover
6. Follow the procedures in *After Working Inside Your Computer*.

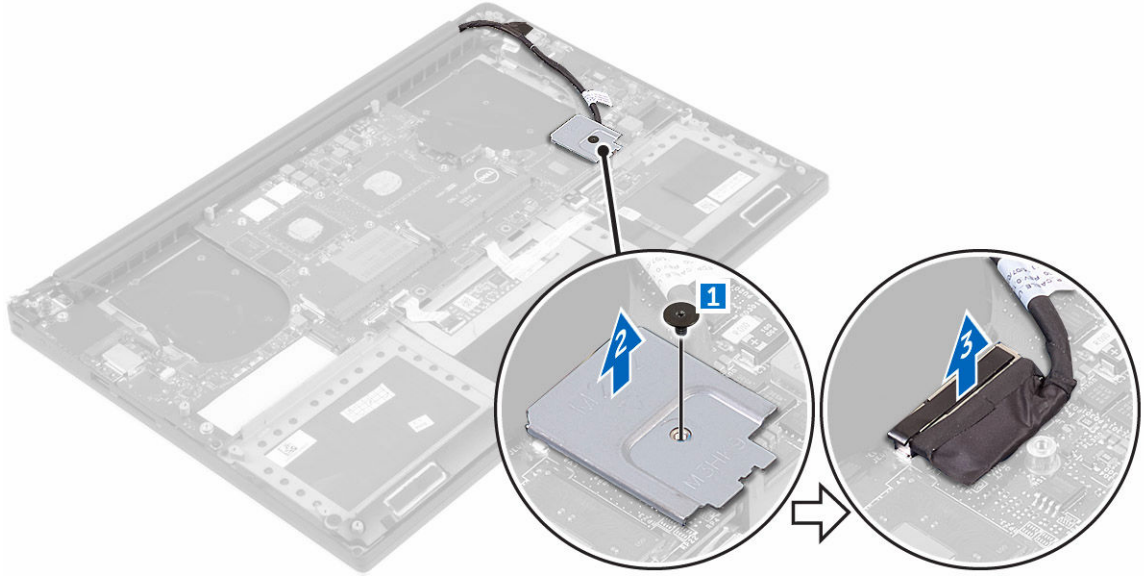
Removing the System Board

1. Follow the procedures in *Before Working Inside Your Computer*.
2. Remove the:
 - a. [base cover](#)
 - b. [battery](#)
 - c. [fans](#)
 - d. [heatsink](#)
 - e. [SSD](#)
 - f. [memory modules](#)

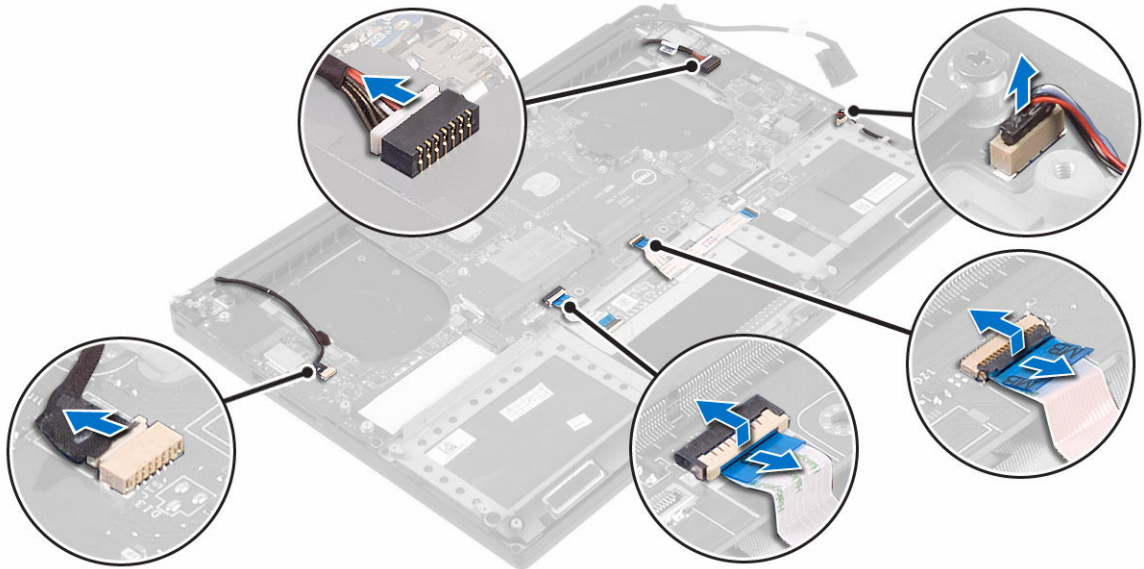
 **NOTE:** Your computer's Service Tag is located under the system badge flap. You must enter the Service Tag in the BIOS after you replace the system board.

 **NOTE:** Before disconnecting the cables from the system board, note the location of the connectors so that you can re-connect them correctly after you replace the system board.

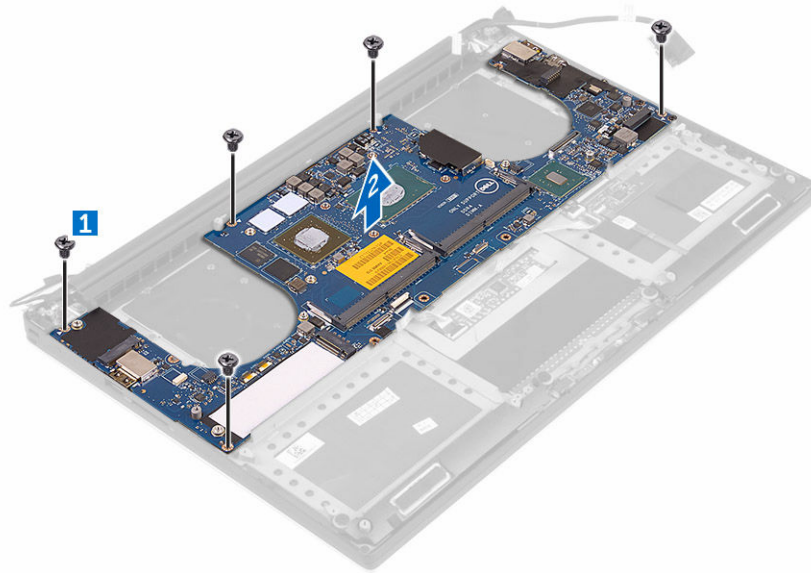
3. Remove the screw securing the metal bracket for the LVDS to the system board [1] and remove the bracket off the computer [2]. Then, disconnect the LVDS cable from the system board [3].



4. Slide out the connector latches to disconnect all the cables from the system board.



5. Perform the following steps to remove the system board from the computer:
 - a. Remove the screws that secure the system board to the computer [1].
 - b. Lift the system board off the computer [2].

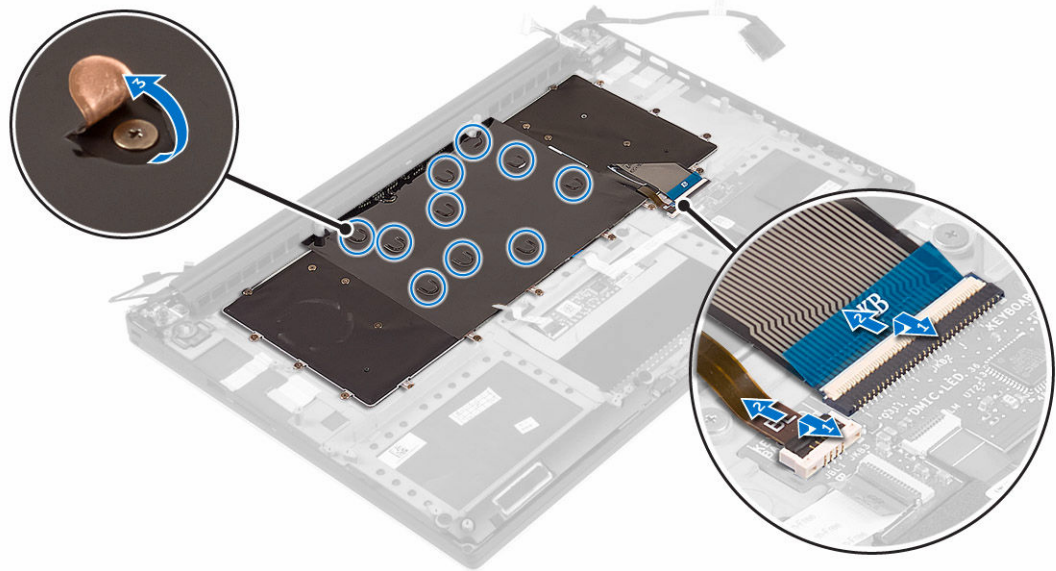


Installing the System Board

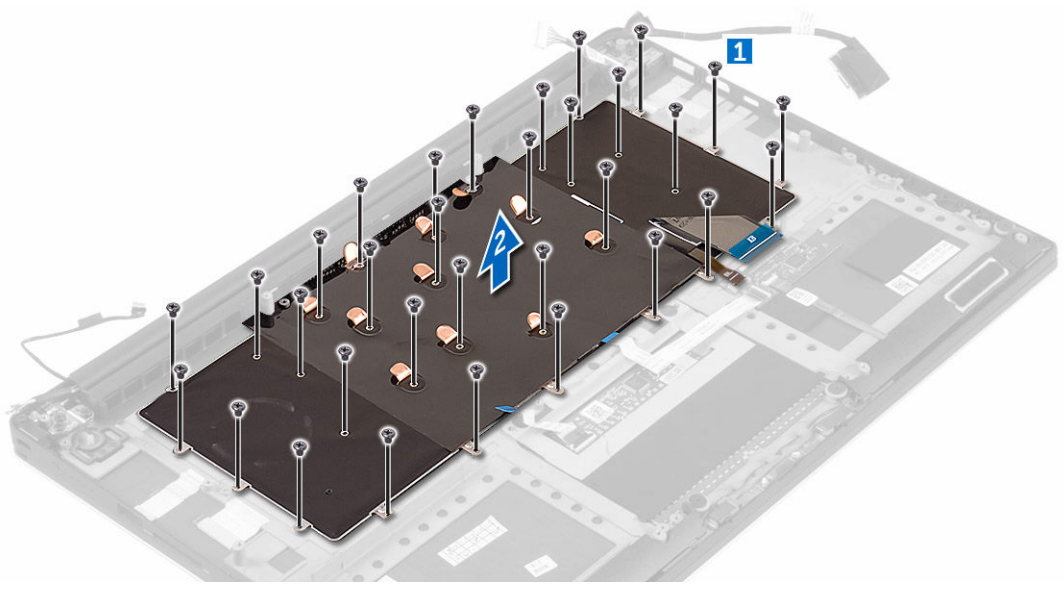
1. Align the system board on the computer.
2. Replace the screws that secure the system board to the palm-rest assembly.
3. Connect the power-adapter port cable, speaker cable, keyboard-control board cable, touch-pad cable, and touch-screen cable to the system board.
4. Connect the display cable to the system board.
5. Align the screw hole on the display-cable bracket with the screw hole on the system board.
6. Follow the procedures in *After Working Inside Your Computer*.

Removing the Keyboard

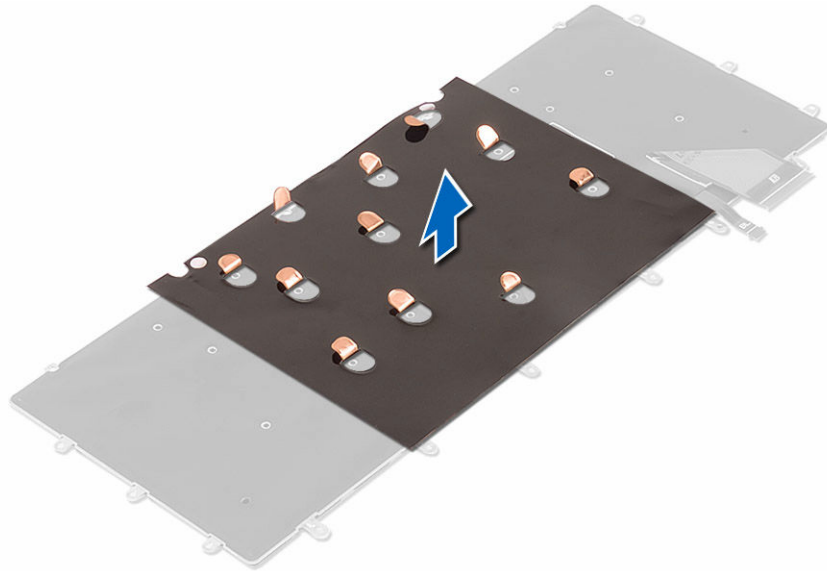
1. Follow the procedures in [Before Working Inside Your Computer](#).
2. Remove the:
 - a. [base cover](#)
 - b. [battery](#)
 - c. [fans](#)
 - d. [heatsink](#)
 - e. [SSD](#)
 - f. [memory modules](#)
 - g. [system board](#)
3. Perform the following steps to disconnect the keyboard and backlight connectors from the computer.
 - a. Lift up the connector lock [1] and disconnect the cables from the connectors [2].
 - b. Peel back the screw shields [3].



4. Un-route the LVDS cable [1] and then remove the screws that secure the keyboard to the computer [2].



5. Lift and remove the keyboard from the computer.

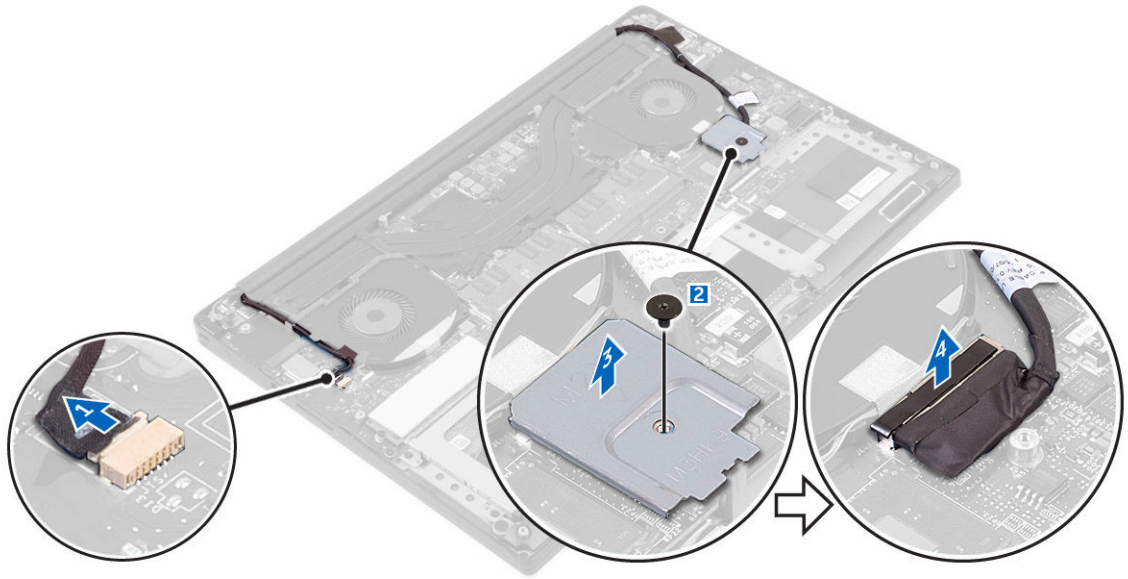


Installing the Keyboard

1. Adhere the Mylar to the keyboard.
2. Align the screw holes on the keyboard with the screw holes on the palm-rest assembly.
3. Replace the screws that secure the keyboard to the palm-rest assembly.
4. Adhere the Mylar to the screws that secure the keyboard to the palm-rest assembly.
5. Connect the keyboard cable and keyboard-backlight cable to the keyboard-controls board.
6. Install the:
 - a. system board
 - b. hard drive
 - c. base cover
7. Follow the procedures in *After Working Inside Your Computer*.

Removing the Display Assembly

1. Follow the procedures in [Before Working Inside Your Computer](#).
2. Remove the:
 - a. [base cover](#)
 - b. [battery](#)
3. Perform the following steps:
 - a. Disconnect the left LVDS cable [1].
 - b. Remove the screw securing the metal bracket [2] and lift the bracket off the computer [3].
 - c. Disconnect the right LVDS cable from the system board [4].



4. Place the computer at the edge of a table as shown and remove the screws [1] securing the display assembly to the computer. Then, lift the display assembly off the computer [2].



Installing the Display Assembly

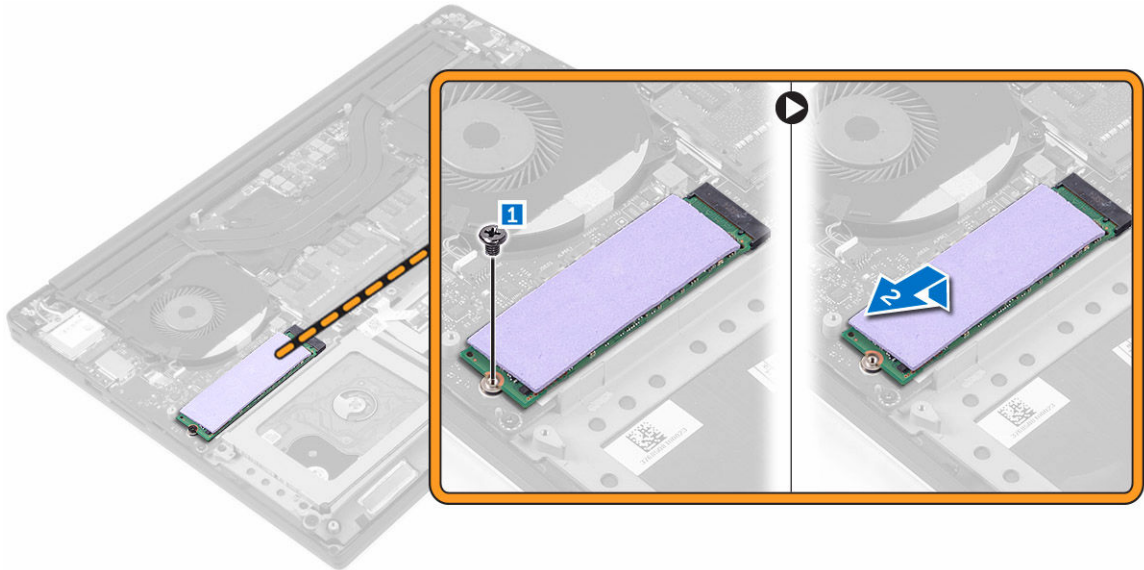
1. Place the palm-rest assembly at the edge of the table with the speakers facing away from the edge.
2. Align the screw holes on the palm-rest assembly with the screw holes on the display hinges.
3. Replace the screws that secure the display hinges to the palm-rest assembly.
4. Adhere the tape and route the touch-screen cable through the routing guides on the fan.
5. Connect the touch-screen cable and display cable to the system board.
6. Replace the screw that secures the display-cable bracket to the system board.
7. Follow the procedures in *After Working Inside Your Computer*.

Removing the Solid State Drive (SSD)


1. Follow the procedures in [Before Working Inside Your Computer](#)
2. Remove the:
 - a. [base cover](#)

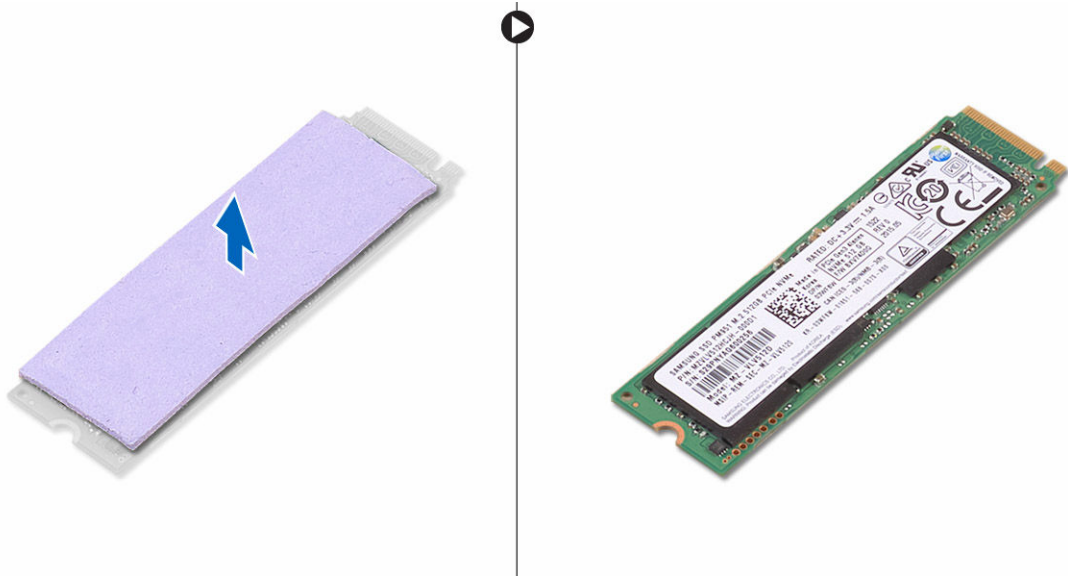
b. [battery](#)

3. Remove the screw that secures the solid-state drive to the system board.



4. Remove the thermal pad from the SSD.

 **NOTE:** The thermal pad is applicable only for a PCIe SSD card.



Installing the solid-state drive

1. Adhere the thermal pad to the solid-state drive.

 **NOTE:** The thermal pad is applicable only for a PCIe SSD card.

2. Slide the solid-state drive at an angle into the solid-state drive slot.

3. Press the other end of the solid-state drive down and replace the screw that secures the solid-state drive to the system board.
4. Install the:
 - a. battery
 - b. base cover
5. Follow the procedures in *After Working Inside Your Computer*.

System Setup

System Setup enables you to manage your computer hardware and specify BIOS level options. From the System Setup, you can:

- Change the NVRAM settings after you add or remove hardware
- View the system hardware configuration
- Enable or disable integrated devices
- Set performance and power management thresholds
- Manage your computer security


Boot Sequence

Boot Sequence allows you to bypass the System Setup-defined boot device order and boot directly to a specific device (for example: optical drive or hard drive). During the Power-on Self Test (POST), when the Dell logo appears, you can:


- Access System Setup by pressing F2 key
- Bring up the one-time boot menu by pressing F12 key

The one-time boot menu displays the devices that you can boot from including the diagnostic option. The boot menu options are:

- Removable Drive (if available)
- STXXXX Drive

 **NOTE:** XXX denotes the SATA drive number.

- Optical Drive
- Diagnostics

 **NOTE:** Choosing **Diagnostics**, will display the **ePSA diagnostics** screen.

The boot sequence screen also displays the option to access the System Setup screen.

Navigation keys

The following table displays the system setup navigation keys.



 **NOTE:** For most of the System Setup options, changes that you make are recorded but do not take effect until you restart the system.

Table 2. Navigation keys

Keys	Navigation
Up arrow	Moves to the previous field.
Down arrow	Moves to the next field.
Enter	Allows you to select a value in the selected field (if applicable) or follow the link in the field.
Spacebar	Expands or collapses a drop-down list, if applicable.
Tab	Moves to the next focus area.
	 NOTE: For the standard graphics browser only.
Esc	Moves to the previous page till you view the main screen. Pressing Esc in the main screen displays a message that prompts you to save any unsaved changes and restarts the system.
F1	Displays the System Setup help file.

System Setup Options


 **NOTE:** Depending on your computer and its installed devices, the items listed in this section may or may not appear.

Table 3. Main

Option	Description
System Time/Date	Allows you to set the date and time.
BIOS Version	Displays the BIOS version.
Product Name	Displays the product name. Dell Precision M3800 (Default Setting)
Service Tag	Displays the service tag.
Asset Tag	Displays the asset tag. None (Default Setting)
CPU Type	Displays the CPU type.
CPU Speed	Displays the CPU speed.
CPU ID	Displays the CPU ID.
CPU Cache	Displays the sizes of the CPU caches.
Fixed HDD	Displays the type and size of the HDD. WDC WD10SPCX-75HWSTO (1000 GB) (Default Setting)
mSATA Device	Displays the type and size of the mSATA device.
AC Adapter Type	Displays the type of the AC adapter. None (Default Setting)







Option	Description
System Memory	Displays the size of the system memory.
Extended Memory	Displays the size of the extended memory.
Memory Speed	Displays the speed of the memory.
Keyboard Type	Displays the type of keyboard. Backlite (Default Setting)

Table 4. Advanced

Option	Description
Intel (R) SpeedStep (TM)	Allows you to enable or disable the Intel (R) SpeedStep (TM) feature. Enabled (Default Setting)
Virtualization	This option specifies whether a Virtual Machine Monitor (VMM) can utilize the additional hardware capabilities provided by Intel Virtualization technology. Allows you to enable or disable the Virtualization feature. Enabled (Default Setting)
USB Emulation	Allows you to enable or disable the USB Emulation feature. Enabled (Default Setting)
USB PowerShare	Allows you to enable or disable the USB PowerShare feature. Enabled (Default Setting)
USB Wake Support	This option allows you to enable USB devices to wake the system from Standby. Disable (Default Setting)
SATA Operation	Displays the SATA Operation information.
Adapter Warnings	Allows you to enable or disable the adapter warnings feature.
Multimedia Key Behaviour	Function Key (Default Setting)
Battery Health	Displays the battery health information.
Battery Charge Configuration	Adaptive (Default Setting)
Miscellaneous Devices	Allows you enable or disable the various on board devices. The options are: <ul style="list-style-type: none"> • External USB Ports - Enabled (Default Setting)

Option	Description
	<ul style="list-style-type: none"> • USB Debug - Disabled (Default Setting)

Table 5. Security

Option	Description
Unlock Setup Status	Unlocked (Default Setting)
Admin Password Status	Displays the status of the admin password. Default Setting: Not set
System Password Status	Displays the status of the system password. Default Setting: Not set
HDD Password Status	Displays the status of the system password. Default Setting: Not set
Asset Tag	Allows you to set the asset tag.
Admin Password	Allows you to set, change, or delete the administrator (admin) password. <ul style="list-style-type: none">  NOTE: You must set the admin password before you set the system or hard drive password.  NOTE: Successful password changes take effect immediately.  NOTE: Deleting the admin password automatically deletes the system password and the hard drive password.  NOTE: Successful password changes take effect immediately.
System Password	Allows you to set, change or delete the system password. <ul style="list-style-type: none">  NOTE: Successful password changes take effect immediately.
HDD Password	Allows you to set, change or delete the administrator password.
Password Change	Allows you to enable or disable permissions to set a System password and a Hard Drive password when the admin password is set. Default Setting: Permitted
Computrace	Allows you to activate or disable the optional Computrace software The options are: <ul style="list-style-type: none"> • Deactivate (Default Setting) • Activate <ul style="list-style-type: none">  NOTE: The Activate and Disable options will permanently activate or disable the feature and no further changes will be allowed.
TPM Security	This option lets you control whether the Trusted Platform Module (TPM) in the system is enabled and visible to the operating system. When disabled the BIOS will not turn On the TPM During POST. The TPM will be non-functional and invisible to the operating system. When



Option	Description
	<p>enabled, the BIOS will turn On the TPM during POST so that it can be used by the operating system. This option is Enable by default.</p> <p> NOTE: Disabling this option does not change any settings you may have made to the TPM, nor does it delete or change any information or keys you may have stored there. It simply turns Off the TPM so that it cannot be used. When you re-enable this option, the TPM will function exactly as it did before it was disabled.</p> <p> NOTE: Changes to this option take effect immediately.</p>

Table 6. Boot




Option	Description
Boot List Option	Default Setting: Legacy
Secure Boot	<p>This option enables or disables the Secure Boot feature.</p> <ul style="list-style-type: none"> • Disabled (Default Setting) - Windows 7 • Enabled - Windows 8.1
Load Legacy Option ROM	<p>This option enables or disables the Load Legacy Option ROM feature.</p> <ul style="list-style-type: none"> • Enabled (Default Setting) - Windows 7 • Disabled - Windows 8.1
Set Boot Priority	<p>Allows you to change the order in which the computer attempts to find an operating system:</p> <ul style="list-style-type: none"> • 1 st Boot Priority [CD/DVD/CD-RW Drive] • 2nd Boot Priority [Network] • 3rd Boot Priority [mini SSD] • 4th Boot Priority [USB Storage Device] • 5th Boot Priority [Hard Drive] • 6th Boot Priority [Diskette Drive]

Table 7. Exit

Option	Description
Save Changes and Reset	Allows you to save the changes you made.
Discard Changes and Reset	Allows you to discard the changes you made.
Restore Defaults	Allows you to restore the default options.
Discard Changes	Allows you to discard the changes you made.
Save Changes	Allows you to save the changes you made.

Updating the BIOS




It is recommended to update your BIOS (System Setup), on replacing the system board or if an update is available. For laptops, ensure that your computer battery is fully charged and connected to a power outlet

1. Restart the computer.
 2. Go to **Dell.com/support**.
 3. Enter the **Service Tag** or **Express Service Code** and click **Submit**.
 -  **NOTE:** To locate the Service Tag, click **Where is my Service Tag?**
 -  **NOTE:** If you cannot find your Service Tag, click **Detect My Product**. Proceed with the instructions on screen.
 4. If you are unable to locate or find the Service Tag, click the Product Category of your computer.
 5. Choose the **Product Type** from the list.
 6. Select your computer model and the **Product Support** page of your computer appears.
 7. Click **Get drivers** and click **View All Drivers**.
The Drivers and Downloads page opens.
 8. On the Drivers and Downloads screen, under the **Operating System** drop-down list, select **BIOS**.
 9. Identify the latest BIOS file and click **Download File**.
You can also analyze which drivers need an update. To do this for your product, click **Analyze System for Updates** and follow the instructions on the screen.
 10. Select your preferred download method in the **Please select your download method below** window, click **Download File**.
The **File Download** window appears.
 11. Click **Save** to save the file on your computer.
 12. Click **Run** to install the updated BIOS settings on your computer.
Follow the instructions on the screen.
-  **NOTE:** It is recommended not to update the BIOS version for more than 3 revisions. For example: If you want to update the BIOS from 1.0 to 7.0, then install version 4.0 first and then install version 7.0.

System and setup password


You can create a system password and a setup password to secure your computer.

Password type	Description
System password	Password that you must enter to log on to your system.
Setup password	Password that you must enter to access and make changes to the BIOS settings of your computer.

-  **CAUTION:** The password features provide a basic level of security for the data on your computer.
-  **CAUTION:** Anyone can access the data stored on your computer if it is not locked and left unattended.
-  **NOTE:** Your computer is shipped with the system and setup password feature disabled.

Assigning a system password and setup password

You can assign a new **System Password** and/or **Setup Password** or change an existing **System Password** and/or **Setup Password** only when **Password Status** is **Unlocked**. If the Password Status is **Locked**, you cannot change the System Password.

 **NOTE:** If the password jumper is disabled, the existing System Password and Setup Password are deleted and you need not provide the system password to log on to the computer.

To enter the system setup, press F2 immediately after a power-on or re-boot.

1. In the **System BIOS** or **System Setup** screen, select **System Security** and press Enter.
The **System Security** screen appears.
2. In the **System Security** screen, verify that **Password Status** is **Unlocked**.
3. Select **System Password**, enter your system password, and press Enter or Tab.
Use the following guidelines to assign the system password:
 - A password can have up to 32 characters.
 - The password can contain the numbers 0 through 9.
 - Only lower case letters are valid, upper case letters are not allowed.
 - Only the following special characters are allowed: space, ("), (+), (.), (-), (.), (/), (:), (I), (\), (I), (').

Re-enter the system password when prompted.


4. Type the system password that you entered earlier and click **OK**.
5. Select **Setup Password**, type your system password and press Enter or Tab.
A message prompts you to re-type the setup password.
6. Type the setup password that you entered earlier and click **OK**.
7. Press Esc and a message prompts you to save the changes.
8. Press Y to save the changes.
The computer reboots.

Deleting or changing an existing system and/or setup password

Ensure that the **Password Status** is Unlocked (in the System Setup) before attempting to delete or change the existing System and/or Setup password. You cannot delete or change an existing System or Setup password, if the **Password Status** is Locked.

To enter the System Setup, press F2 immediately after a power-on or reboot.

1. In the **System BIOS** or **System Setup** screen, select **System Security** and press Enter.
The **System Security** screen is displayed.
2. In the **System Security** screen, verify that **Password Status** is **Unlocked**.
3. Select **System Password**, alter or delete the existing system password and press Enter or Tab.
4. Select **Setup Password**, alter or delete the existing setup password and press Enter or Tab.

 **NOTE:** If you change the System and/or Setup password, re-enter the new password when prompted. If you delete the System and/or Setup password, confirm the deletion when prompted.

5. Press Esc and a message prompts you to save the changes.
6. Press Y to save the changes and exit from System Setup.
The computer reboots.


Diagnostics


If you experience a problem with your computer, run the ePSA diagnostics before contacting Dell for technical assistance. The purpose of running diagnostics is to test your computer's hardware without requiring additional equipment or risking data loss. If you are unable to fix the problem yourself, service and support personnel can use the diagnostics results to help you solve the problem.

Enhanced Pre-Boot System Assessment (ePSA) diagnostics

The ePSA diagnostics (also known as system diagnostics) performs a complete check of your hardware. The ePSA is embedded with the BIOS and is launched by the BIOS internally. The embedded system diagnostics provides a set of options for particular devices or device groups allowing you to:

- Run tests automatically or in an interactive mode
- Repeat tests
- Display or save test results
- Run thorough tests to introduce additional test options to provide extra information about the failed device(s)
- View status messages that inform you if tests are completed successfully
- View error messages that inform you of problems encountered during testing


 **CAUTION:** Use the system diagnostics to test only your computer. Using this program with other computers may cause invalid results or error messages.

 **NOTE:** Some tests for specific devices require user interaction. Always ensure that you are present at the computer terminal when the diagnostic tests are performed.

1. Power-on the computer.
2. As the computer boots, press the F12 key as the Dell logo appears.
3. On the boot menu screen, select the **Diagnostics** option.
The **Enhanced Pre-boot System Assessment** window is displayed, listing all devices detected in the computer. The diagnostics starts running the tests on all the detected devices.
4. To run a diagnostic test on a specific device, press Esc and click **Yes** to stop the diagnostic test.
5. Select the device from the left pane and click **Run Tests**.
6. If there are any issues, error codes are displayed.
Note the error code and contact Dell.

Device Status Light

Table 8.

Icon	Description
	Turns on when you turn on the computer.

Technical Specifications



 **NOTE:** Offerings may vary by region. For more information regarding the configuration of your computer, click Start  (**Start icon**) → **Help and Support**, and then select the option to view information about your computer.

Table 9. System Information

Feature	Specification
System Chipset	Mobile Intel HM170 Express Chipset / Intel CM236
DMA Channels	two VT-d DMA remap engines
Interrupt Levels	Intel 64 and IA-32 Architecture
BIOS Chip (NVRAM)	8 MB

Table 10. Processor

Feature	Specification
Processor type	6th Generation Intel Core i3/ 6th Generation Intel Quad Core i5/ 6th Generation Intel Quad Core i7
L1 cache	up to 256 KB cache depending on processor type
L2 cache	up to 1024 KB cache depending on processor type
L3 cache	up to 6144 KB cache depending on processor type

Table 11. Memory

Feature	Specification
Type	DDR4
Speed	2133 MHz
Connectors	2 SoDIMM Sockets
Capacity	8 GB, 16 GB, and 32GB
Minimum Memory	8 GB
Maximum memory	32 GB

Table 12. Video

Feature	Specification
Type	
Discrete	NVIDIA GeForce GTX 960M

Feature	Specification
Integrated	Intel HD Graphics 530
Data bus	PCIe x16, Gen3
Memory	
Discrete	Up to 2 GB GDDR5
Integrated	Shared system memory

Table 13. Audio

Feature	Specification
Integrated	dual-channel High-Definition audio

Table 14. Communication


Feature	Specification
Network adapter	Ethernet via USB-to-Ethernet Dongle provided in box.  NOTE: No RJ45 (10/100/1000Base-T, IPv6) provided.
Wireless	<ul style="list-style-type: none"> • Wi-Fi 802.11ac • Wi-Fi 802.11a/g/n • Bluetooth 4.1 • Intel WiDi (optional)

Table 15. Ports and Connectors

Feature	Specification
Audio	<ul style="list-style-type: none"> • One headset port (headphone and microphone combo)
USB 3.0	<ul style="list-style-type: none"> • two USB 3.0 ports with PowerShare • One Thunderbolt 3 port with PowerShare (USB-C)
Video	<ul style="list-style-type: none"> • one HDMI 1.4
Memory card reader	SD 4.0

Table 16. Display

Feature	Specification
Type	1920 x 1080 FHD 3840 x 2160 UltraHD
Size	15.6 inches FHD 15.6 inches UltraHD

Dimensions:

Feature	Specification
Height	194.50 mm (7.66 in)
Width	345.60 mm (13.61 in)
Diagonal	396.52 mm (15.61 in)
Active area (X/Y)	194.50 mm (7.66 in) x 345.60 mm (13.61 in) x 396.52 mm (15.61 in)
Maximum resolution	1920 X 1080 pixels / 3840 X 2160 pixels
Maximum Brightness	400 nits
Operating angle	0° (closed) to 135°
Refresh rate	60 Hz
Minimum viewing angles:	
Horizontal	80/80
Vertical	80/80

Table 17. Keyboard

Feature	Specification
Number of keys	<ul style="list-style-type: none"> • United States: 80 keys • United Kingdom: 81 keys • Brazil: 81 keys • Japan: 84 keys
Layout	QWERTY/AZERTY/Kanji

Table 18. Touchpad

Feature	Specification
Active Area:	
X-axis	105 mm
Y-axis	80 mm

Table 19. Camera

Feature	Specification
Type	HD Camera / Digital Array Microphone
Still Resolution	0.92 megapixels (Maximum)
Video Resolution	1280 x 720 pixels (HD) at 30 frames per second (Maximum)
Diagonal	74 degrees

Table 20. Storage

Feature	Specification
Storage:	
Storage Interface	SATA 3 Gbps SATA 6 Gbps
Drives configurations:	
Hard Drives (optional)	one internal 2.5 inch SATA HDD (supports Intel Smart Response Technology)
Solid State Drives (optional)	one Solid State Drive (SSD), with Intel Cache support
Size:	512 GB and 1 TB

Table 21. Battery

Feature	Specification
Type	Li-polymer 3-cell (56 Whr) / 6-cell (84 Whr)
Dimensions :	
56 Whr :	
Depth	223.20 mm (8.79 in)
Height	7.20 mm (0.28 in)
Width	71.80 mm (2.83 in)
Weight	0.54 lb (0.24 kg)
84 Whr :	
Depth	330.50 mm (13.01 in)
Height	7.20 mm (0.28 in)
Width	71.80 mm (2.83 in)
Weight	0.76 lb (0.34 kg)
Voltage	11.4 V
Life span	300 discharge/charge cycles
Temperature range:	
Operating (approximate)	<ul style="list-style-type: none"> • Charge : 0 °C to 50 °C (32 °F to 158 °F) • Discharge: 0 °C to 70 °C (32 °F to 122 °F) • Operating: 0 °C to 35 °C (32 °F to 95 °F)
Non-operating	-40 °C to 65 °C (-40 °F to 149 °F)
Coin-cell battery	ML1220

Table 22. AC Adapter

Feature	Specification
Input voltage	100 VAC to 240 VAC
Input current (maximum)	1.80 A
Input frequency	50 Hz to 60 Hz
Output power	130 W
Output current	6.67 A
Rated output voltage	19.50 VDC
Dimensions:	
Height	22 mm (0.86 inches)
Width	66 mm (2.59 inches)
Depth	143 mm (5.62 inches)
Temperature range:	
Operating	0 °C to 40 °C (32 °F to 104 °F)
Non Operating	-40 °C to 70 °C (-40 °F to 158 °F)

Table 23. Physical Dimensions


Physical	Specification
Height:	17 mm (0.66 in)
Width	357 mm (14.06 in)
Depth	235 mm (9.27 in)
Weight (Minimum)	2 kg (4.41 lb)

Table 24. Environmental

Feature	Specification
Temperature range:	
Operating	0 °C to 40 °C (32 °F to 104°F)
Storage	-40 °C to 70 °C (-40 °F to 158 °F)
Relative humidity (maximum):	
Operating	10 % to 90 % (non-condensing)
Storage	10 % to 95 % (non-condensing)
Maximum vibration:	
Operating	0.66 GRMS, 2 Hz - 600 Hz
Storage	1.3 GRMS, 2 Hz - 600 Hz
Maximum shock:	

Feature	Specification
Operating	110 G, 2 ms
Non-operating	160 G, 2 ms
Altitude:	
Operating	-15.2 m to 3048 m (-50 to 10,000 ft)
Storage	15.2 m to 10,668 m (-50 ft to 35,000 ft)
Airborne contaminant level	G1 as defined by ISA-S71.04-1985

Contacting Dell

 **NOTE:** If you do not have an active Internet connection, you can find contact information on your purchase invoice, packing slip, bill, or Dell product catalog.

Dell provides several online and telephone-based support and service options. Availability varies by country and product, and some services may not be available in your area. To contact Dell for sales, technical support, or customer service issues:

1. Go to **Dell.com/support**.
2. Select your support category.
3. Verify your country or region in the **Choose a Country/Region** drop-down list at the bottom of the page.
4. Select the appropriate service or support link based on your need.