

# SELPHY CP1000

COMPACT PHOTO PRINTER

# Printer User Guide

ENGLISH

- Make sure you read this guide, including the “Safety Precautions” section, before using the printer.
- Reading this guide will help you learn to use the printer properly.
- Store this guide safely so that you can use it in the future.
- Click the buttons in the lower right to access other pages.
  - ▶: Next page
  - ◀: Previous page
  - 🔗: Page before you clicked a link
- To jump to the beginning of a chapter, click the chapter title on the right.

From chapter title pages, you can access topics by clicking their titles.

Cover

Contents

Part Names

Basic Operations

Print Settings

Printing via USB Cable

Troubleshooting

Appendix

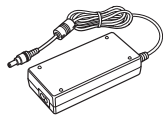


## Package Contents

Before use, make sure the following items are included in the package.  
If anything is missing, contact the retailer where you purchased the printer.



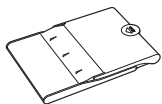
□ SELPHY Printer



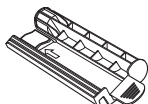
□ Compact Power Adapter CA-CP200 B



□ Power Cord



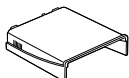
□ Paper Cassette PCP-CP400



□ Cleaner Unit\*



□ Dust Protection Cover (For Back)\*



□ Dust Protection Cover (For Front)\*

- Printed matter is also included.
- \* May not be included in some regions.

## Ink and Paper (Sold Separately)

Before use, purchase a Color Ink / Paper Set.

Color Ink / Paper Set			Necessary Paper Cassette
Product Name	Paper Size	Number of Possible Prints	
Color Ink / Paper Set RP-108 (Photo Paper)	Postcard Size	108	Paper Cassette PCP-CP400 (included with SELPHY)
Color Ink / Paper Set RP-1080V (Photo Paper)		1080	
Color Ink / Paper Set KP-36IP (Postcard)		36	
Color Ink / Paper Set KP-108IN (Photo Paper)		108	
Color Ink / Paper Set KC-36IP	Card Size	36	Paper Cassette PCC-CP400*
Color Ink / Label Set KC-18IF (Full-Page Label)		18	
Color Ink / Label Set KC-18IL (8 Labels per Page)		18	
Color Ink / Label Set KC-18IS (Square Labels)		18	

\* Purchase with the Color Ink / Paper Set.  
Accessory availability varies by region.

Cover

Contents

Part Names

Basic Operations

Print Settings

Printing via USB Cable

Troubleshooting

Appendix



## Before Use

- Images printed with this product are to be used for personal enjoyment. Unauthorized printing of copyrighted material is prohibited.
- For information on printer warranty or Canon Customer Support, please refer to the warranty information provided with your printer User Manual Kit.
- Although the LCD monitor is produced under extremely high-precision manufacturing conditions and more than 99.99% of the pixels meet design specifications, in rare cases some pixels may be defective or may appear as red or black dots. This does not constitute a malfunction or affect printed images.
- The LCD monitor may be covered with a thin plastic film for protection against scratches during shipment. If so, remove the film before use.

## Conventions in This Guide

- In this guide, the printer is referred to as “SELPHY” or “the printer”.
- Icons are used in this guide to represent buttons on SELPHY. Refer to “Controls” (📖6) for details.
- On-screen text or icons are shown in square brackets, as in [ ].
- ⓘ: Important information you should know
- ✍️: Notes and tips for expert use
- 📖xx: Pages with related information (In this example, “xx” represents a page number.)
- Instructions in this guide apply to the printer under default settings.
- For convenience, all supported memory cards are simply referred to as “memory card”.

## Safety Precautions

- Before using the product, please ensure that you read the safety precautions described below. Always ensure that the product is used correctly.
- The safety precautions noted on the following pages are intended to prevent injuries to yourself and other persons, or damage to the equipment.
- Be sure to also check the guides included with any separately sold accessories you use.



### Warning

Denotes the possibility of serious injury or death.

- **Store this equipment out of the reach of children and infants.** Mistakenly putting the power cord around a child’s neck could result in asphyxiation.
- **Use only recommended power sources.**
- **Do not attempt to disassemble, alter, or apply heat to the product.**
- **Avoid dropping or subjecting the product to severe impacts.**
- **To avoid the risk of injury, do not touch the interior of the product if it has been dropped or otherwise damaged.**
- **Stop using the product immediately if it emits smoke, a strange smell, or otherwise behaves abnormally.**
- **Do not use organic solvents such as alcohol, benzene, or thinner to clean the product.**
- **Do not let the product come into contact with water (e.g. sea water) or other liquids.**
- **Do not allow liquids or foreign objects to enter the product.** This could result in electrical shock or fire. If liquid comes into contact with the product, unplug it from the outlet and consult your retailer or a Canon Customer Support Help Desk.

- **Do not touch the printer or the power plug during thunderstorms.** This could result in electrical shock or fire. Immediately stop using the equipment and distance yourself from it.

Cover

Contents

Part Names

Basic Operations

Print Settings

Printing via USB Cable

Troubleshooting

Appendix



- **Unplug the power cord periodically, and using a dry cloth, wipe away any dust or dirt that has collected on the plug, the exterior of the power outlet, and the surrounding area.**
- **Do not handle the power cord with wet hands.**
- **Do not use the equipment in a manner that exceeds the rated capacity of the electrical outlet or wiring accessories. Do not use if the power cord or plug are damaged, or not fully plugged into the outlet.**
- **Do not allow dirt or metal objects (such as pins or keys) to contact the terminals or plug.**
- **Do not cut, damage, alter, or place heavy items on the power cord.**

This could result in electrical shock or fire.

- **If a CD-ROM is supplied, do not play it in any CD player that does not support data CD-ROMs.**

It is possible to suffer hearing loss from listening with headphones to the loud sounds of a CD-ROM played on a music CD player. Additionally, playing the CD-ROM(s) in an audio CD player (music player) could damage the speakers.



### Caution

Denotes the possibility of injury.

- **Do not stick any part of your hand into the printer interior.**
- **Place SELPHY in a safe location where people will not trip over the power cord.**

Failure to do this may lead to injury or printer damage.

- **Avoid using, placing, or storing the product in the following places:**
  - **Places subject to direct sunlight**
  - **Places subject to temperatures above 40 °C (104 °F)**
  - **Humid or dusty places**
  - **Places subject to strong vibration**

This may cause overheating of or damage to the printer or adapter, which may result in electric shock, burns or other injury, or fire.

High temperature may deform the product or adapters.

### Caution

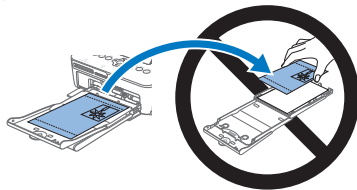
Denotes the possibility of damage to the equipment.

- **Unplug the product from the power outlet when you are not using it.**
- **Do not place anything, such as cloth, on top of the printer while in use.**

Leaving the unit plugged in for a long period of time may cause it to overheat and distort, resulting in fire.

- **Never reuse paper for printing, even if most of the paper is blank, as shown.**

Reusing paper may damage the printer if paper jams or the ink sheet adheres to the paper.



- **Do not unplug the printer while it is printing.**

If you accidentally turn the printer off while printing, restart it and wait until the paper is ejected. If paper jams and cannot be removed, contact your retailer or a Canon Customer Support Help Desk. Do not attempt to remove jammed paper by force, which may damage the printer.

- **Do not use the printer near motors or other devices that generate strong magnetic fields, or in dusty environments.**

This may damage the printer or cause malfunction.

Cover

Contents

Part Names

Basic Operations

Print Settings

Printing via USB Cable

Troubleshooting

Appendix



## Contents

Package Contents .....	2
Ink and Paper (Sold Separately)....	2
Before Use .....	3
Conventions in This Guide.....	3
Safety Precautions.....	3
Contents.....	5
Part Names.....	5

## Basic Operations ..... 7

Initial Preparations .....	8
Supported Cards/Images .....	14
Printing Images (Select & Print)....	15
Storing Prints .....	18
After Printing .....	18

## Print Settings ..... 20

Printing All Images .....	21
Cropping Images .....	22
Printing ID Photos .....	23
Adjusting Settings .....	25

## Printing via USB Cable .. 33

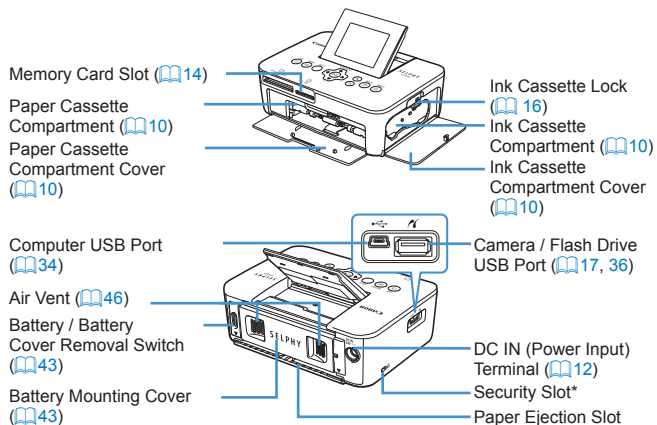
Printing from a Computer.....	34
Printing from a Camera.....	36

## Troubleshooting ..... 38

## Appendix ..... 42

Printing without a Power Outlet ...	43
Specifications.....	44
Handling and Maintenance .....	46

## Part Names



\* Security cables, such as a Kensington lock, can be attached to this slot.

Cover

Contents

Part Names

Basic Operations

Print Settings

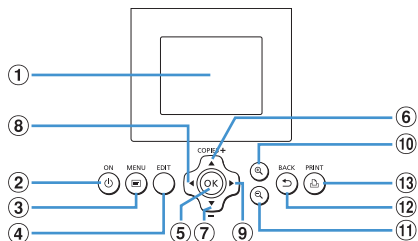
Printing via USB Cable

Troubleshooting

Appendix

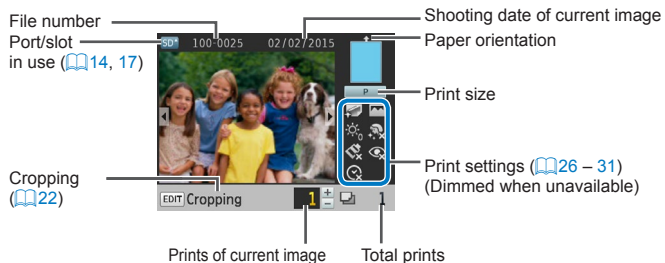


## Controls



Icons in This Guide	Name	Function
①	–	Screen (LCD monitor) Displays images, setting screens, or error messages (141)
②	<⏻>	ON button Turns SELPHY on or off (13)
③	<☰>	MENU button Displays the menu screen (13)
④	–	EDIT button Displays the editing menu and rotates the crop frame
⑤	<OK>	OK button Confirms the selected item
⑥	<▲>	Up / More prints button Specifies the print quantity or selects setting items
⑦	<▼>	Down / Fewer prints button
⑧	<◀>	Left button Switches images, changes setting values
⑨	<▶>	Right button
⑩	<⌕>	Enlarge button Switches display modes, enlarges the crop frame
⑪	<🔍>	Reduce button Switches display modes, reduces the crop frame
⑫	<↩>	BACK button Restores the previous screen (26), cancels printing (16)
⑬	<🖨>	PRINT button Starts printing (16)

## On-Screen Information



### Switching Display Modes

Press the <🔍> button for full-screen display at higher resolution. The print area is outlined. Press the <🔍> button to restore single-image display. Press the <🔍> button to view nine images at once. Press the <⌕> button to restore single-image display.

Cover

Contents

Part Names

Basic Operations

Print Settings

Printing via USB Cable

Troubleshooting

Appendix



# Basic Operations

This chapter introduces basic printing operations such as preparing the printer, selecting images on a memory card, and specifying the number of prints.

<b>Initial Preparations</b> .....	<b>8</b>
Preparing the Ink Cassette.....	8
Preparing the Paper Cassette.....	9
Loading the Cassettes .....	10
Attaching the Dust Protection Covers .....	11
Installing and Plugging in SELPHY .....	12
Display Language .....	13
<b>Supported Cards/Images</b> .....	<b>14</b>
Checking Supported Memory Cards and the Slot to Use .....	14

Supported Images.....	14
<b>Printing Images (Select &amp; Print)</b> .....	<b>15</b>
Avoiding Left Over Paper .....	17
Printing from USB Flash Drives .....	17
Making One Print from a Selected Image .....	17
<b>Storing Prints</b> .....	<b>18</b>
<b>After Printing</b> .....	<b>18</b>
Regular Cleaning .....	19

Cover

Contents

Part Names

**Basic Operations**

Print Settings

Printing via USB Cable

Troubleshooting

Appendix

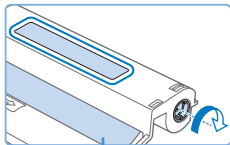


## Initial Preparations

Prepare for printing as follows. This example shows a Postcard-size Color Ink / Paper Set (sold separately, [📖2](#)) but the same steps are followed for other sizes.

Avoid getting dust on ink sheets or paper, which may cause banding or damage the printer ([📖4](#)).

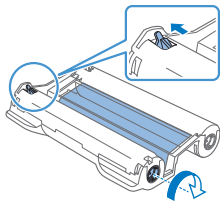
### Preparing the Ink Cassette



Ink sheet

#### Check the ink cassette and ink sheet.

- Holding the ink cassette without touching the ink sheet, check the size (such as “Postcard Size” or “Card Size”) to make sure it matches the size of paper you will print on.
- Make sure the ink sheet is taut. Loose ink sheets may tear when loaded. If the sheet is loose, turn the sprocket as shown.
- For an ink cassette that has a lock on the bottom, press the lock (as shown) to release it as you turn the sprocket to make the sheet taut.



- Do not hold the ink cassette with wet hands. Avoid touching the ink sheet, and avoid getting dust on it. Dirt or moisture may cause banding or affect print quality, tear ink sheets and prevent printing, or damage the printer ([📖4](#)).
- When turning the sprocket, turn it gently, only until the sheet is taut. Forcing the sprocket or overtightening it may tear ink sheets and prevent printing, or SELPHY may run out of ink before paper.
- Never reuse ink cassettes, which may damage the printer or cause malfunction.

Cover

Contents

Part Names

Basic Operations

Print Settings

Printing via USB Cable

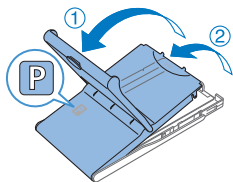
Troubleshooting

Appendix





## Preparing the Paper Cassette



### 1 Check the paper size.

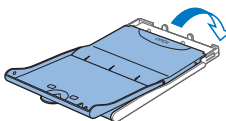
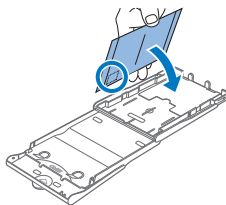
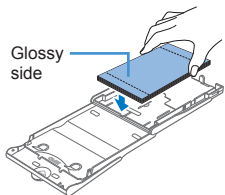
- Check the size on the paper cassette (such as “Postcard Size” or “Card Size”) to make sure it matches the size of the ink cassette.

### 2 Open both covers.

- There are two layers of covers. First open the outer cover (1), and then the inner cover (2).

### 3 Load the paper.

- Load the paper in the paper cassette.
- The paper cassette holds up to 18 sheets. Loading 19 or more sheets may damage the printer or cause malfunction.
- Holding the paper as shown, load it with the glossy side up. (Do not touch the glossy side of the paper, which may affect print quality.)



- Remove any protective sheets from the paper, and load only paper into the cassette.

- When making postcard prints with space for a stamp, load the paper with the stamp area facing as shown.

### 4 Close the inner cover.

- Close the inner cover firmly until it clicks into place.
- Leave the outer cover open when printing.

Cover

Contents

Part Names

Basic Operations

Print Settings

Printing via USB Cable

Troubleshooting

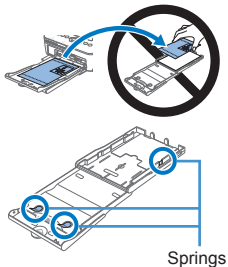
Appendix





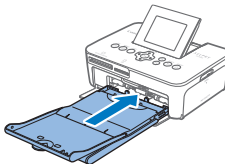
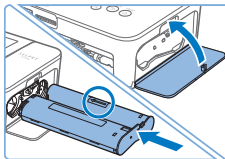
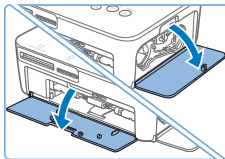
- This product is designed to achieve excellent performance when used with genuine Canon Color Ink / Paper Sets for SELPHY CP printers. Canon shall not be liable for any damage to this product caused by the use of non-genuine Canon Color Ink / Paper Sets for SELPHY CP printers.
- Never do the following, which may damage the printer or cause malfunction.

- Loading paper upside-down, with the glossy and back sides reversed
- Bending or separating paper at the perforations before printing
- Using label paper whose upper label surface is peeling off or has been partially pulled up
- Writing on paper before printing
- Reusing paper, such as printing on blank areas (4)



- Do not touch the springs on the paper cassette. Accidentally bending the springs may prevent efficient paper feeding.
- Note that one spring is attached in the center on the top of card-size paper cassettes.
- Avoid touching or rubbing the glossy, printing side of the paper. Do not handle paper with wet hands, and keep paper free of dust. Dirt or moisture may cause banding or affect print quality, or damage the printer (4).

## Loading the Cassettes



### 1 Open the covers.

- Open the ink and paper compartment covers.

### 2 Load the ink cassette.

- Insert the ink cassette into the printer in the direction of the arrow on the cassette until it clicks into place.
- Close the ink cassette compartment cover.

### 3 Load the paper cassette.

- Making sure the outer cover is open (9), insert the paper cassette all the way into the compartment.

Cover

Contents

Part Names

Basic Operations

Print Settings

Printing via USB Cable

Troubleshooting

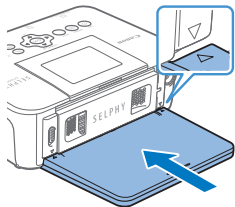
Appendix



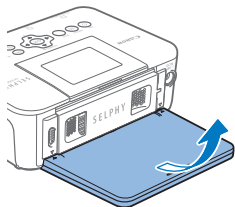
## Attaching the Dust Protection Covers

Attaching the dust protection covers will help keep paper clean and free of dust. Note that dust protection covers are not included in some regions.

### Attaching and Removing the Back Cover

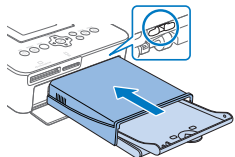


- Insert the back dust protection cover as shown, by aligning with the  $\triangle$  marks behind the printer.



- To remove, first lift it upwards to release the tabs, and then pull it towards you.

### Attaching and Removing the Front Cover



- Insert the tab of the front dust protection cover as shown.
- To remove, pull it towards you.



- It may not be possible to keep paper free of dust outdoors or in dusty environments. Be careful about where you use the printer.



- Store the dust protection covers in a bag or other container to keep them free of dust.

Cover

Contents

Part Names

Basic Operations

Print Settings

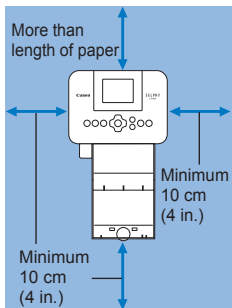
Printing via USB Cable

Troubleshooting

Appendix



## Installing and Plugging in SELPHY

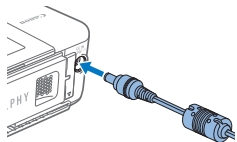


### 1 Choose the right place to put SELPHY.

- Place the printer on a table or other flat, stable surface. Never place the printer on an unstable or tilted surface.
- Keep the printer away from sources of electromagnetism or strong magnetism.
- Leave at least 10 cm (4 in.) of open space around the printer.
- Leave more open space behind the printer than the length of paper used, so that the paper can pass in and out of the printer freely when printing.

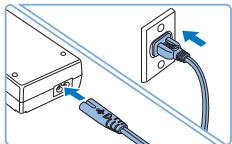
### 2 Plug the adapter cord into SELPHY.

- Insert the adapter plug fully into the power inlet on SELPHY.



### 3 Connect the power cord.

- Connect the power cord to the compact power adapter, and then plug the other end into a power outlet.



- Do not use the printer near motors or other devices that generate strong magnetic fields, or in dusty environments. This may damage the printer or cause malfunction.
- Do not place the printer near televisions or radios. This may cause the printer to malfunction.

Cover

Contents

Part Names

Basic Operations

Print Settings

Printing via USB Cable

Troubleshooting

Appendix



## Display Language

Change the language of menus and messages.

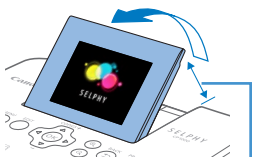


### 1 Turn on SELPHY.

- Press the <Power> button until the screen on the left is displayed.
- To turn off SELPHY, hold the <Power> button again until the screen changes.

### 2 Raise the screen (LCD monitor).

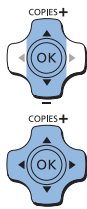
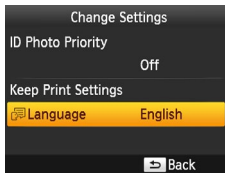
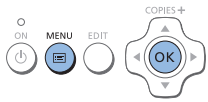
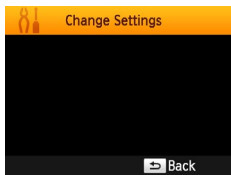
- Never force the screen up more than 45°, which may damage the printer or cause malfunction.



Approx. 45°

### 3 Access the setting screen.

- Press the <Menu> button.
- Press the <OK> button.



### 4 Access the language setting screen.

- Press the <Up><Down> buttons to select [Language], and then press the <OK> button.

### 5 Choose a language.

- Press the <Up><Down><Left><Right> buttons to select a language, and then press the <OK> button.

Cover

Contents

Part Names

Basic Operations

Print Settings

Printing via USB Cable

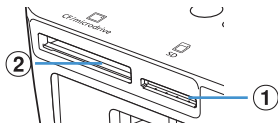
Troubleshooting






Appendix



## Supported Cards/Images

### Checking Supported Memory Cards and the Slot to Use



Memory Card Slot	No Adapter Required	Adapter Required (Sold Separately)
①  SD	<ul style="list-style-type: none"><li>• SD Memory Card</li><li>• SDHC Memory Card</li><li>• SDXC Memory Card</li></ul> 	<ul style="list-style-type: none"><li>• miniSD Memory Card</li><li>• miniSDHC Memory Card </li><li>• microSD Memory Card</li><li>• microSDHC Memory Card</li><li>• microSDXC Memory Card</li></ul>
②  CF/microdrive	<ul style="list-style-type: none"><li>• CF (CompactFlash) Card </li><li>• Microdrive</li></ul>	<ul style="list-style-type: none"><li>• xD-Picture Card</li></ul>



- For memory cards that require an adapter, always insert the card into the adapter before inserting the adapter into the card slot. If you mistakenly insert the memory card into the card slot without an adapter, you may not be able to remove the card from the printer.
- Use a memory card formatted with the device you shot the photos with. Images on cards formatted with a computer may not be recognized.



- For instructions, refer to the memory card or adapter user manual.

### USB Flash Drives

You can print images on USB flash drives (sold separately) by inserting the drive into the USB port on SELPHY (17).

### Supported Images

JPEG images conforming to the Exif standard can be printed with SELPHY.



- Images may not be displayed or printed correctly depending on their size or if they have been edited on a computer.

Cover

Contents

Part Names

Basic Operations

Print Settings

Printing via USB Cable

Troubleshooting

Appendix



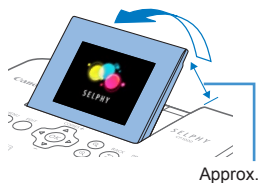
## Printing Images (Select & Print)

Select images and specify the number of prints as follows. Here, printing from an SD memory card is described as an example, but you can print from other memory cards with the same steps.



### 1 Turn on SELPHY.

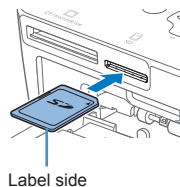
- Press the <⏻> button until the screen on the left is displayed.
- To turn off SELPHY, hold the <⏻> button again until the screen changes.



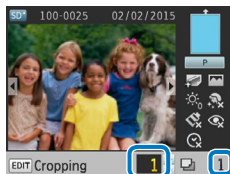
Approx. 45°

### 2 Raise the screen (LCD monitor).

- Never force the screen up more than 45°, which may damage the printer or cause malfunction.



Label side



Prints of current image

Total prints



### 3 Insert the memory card into the slot.

- Insert the memory card facing as shown until it clicks into place.
- To remove the card, push it in until it clicks, and then slowly release it.
- The image display screen used in the next step is displayed (📖6).

### 4 Choose an image.

- Press the <◀><▶> buttons to select an image to print.
- To jump forward or back by five images, hold down the <◀><▶> buttons.

### 5 Specify the number of prints.

- Press the <▲><▼> buttons to specify the number of prints.
- To increase or decrease the quantity by five prints, hold down the <▲><▼> buttons.
- To print other images at the same time, repeat steps 4 – 5.

Cover

Contents

Part Names

Basic Operations

Print Settings

Printing via USB Cable

Troubleshooting

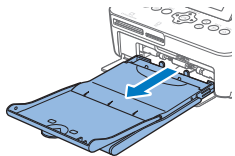
Appendix





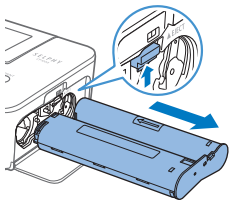
## 6 Print.

- Press the button to start printing.
- While printing, paper passes in and out of the back of SELPHY several times. Do not touch the paper until printing is finished and the print is ejected onto the paper cassette.
- Do not allow 19 or more prints to collect in the ejection area on the paper cassette.
- To cancel printing in progress, always press the button.



## 7 Add more paper as needed.

- If a message indicates that the paper has run out, remove the paper cassette without turning off the power.
- Add more paper to the cassette (9) and reinsert the cassette in SELPHY (10).



## 8 Change the ink cassette as needed.

- If a message indicates that the ink has run out, open the ink cassette compartment cover without turning off the power.
- To remove the ink cassette, move the lock in the direction shown. Insert a new ink cassette (8, 10).



- Never pull out the paper cassette, open the ink cassette compartment cover, or remove a memory card while printing or when you hear printer operation sounds immediately after it has been turned on. This may damage the printer.
- To cancel printing in progress, always press the button. Printing cannot be canceled by pressing the button, and unplugging the printer may damage it.



- Image display in step 4 may take some time when memory cards contain many images.
- If a message indicates that DPOF images remain, see "Printing Using Camera Settings (DPOF Print)" (37).
- You can specify up to 99 images in step 4 and up to 99 prints per image in step 5. However, the total number of prints cannot exceed 999.
- Even if you press the button to cancel printing, the printer will continue printing until the current sheet is finished.

Cover

Contents

Part Names

Basic Operations

Print Settings

Printing via USB Cable

Troubleshooting

Appendix





## Avoiding Left Over Paper

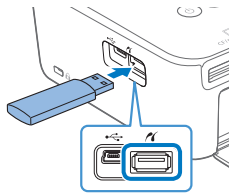
Note the following to prevent wasted paper, which occurs if ink is consumed faster than the paper.

- Do not turn the sprocket too much when removing slack from the ink sheet (8).
- To cancel printing in progress, always press the <↔> button; after pressing the <↔> button, never turn off the power before SELPHY is finished printing (step 6).
- If a message indicates that the paper has run out, add paper without turning off the printer or removing the ink cassette (step 7). Otherwise, press the <↔> button to cancel printing (step 6).

Note that under some conditions, even if you follow these instructions, ink may be consumed faster than the paper, leaving you with excess paper.

## Printing from USB Flash Drives

Images on USB flash drives (sold separately) can be printed the same way as images on memory cards.



- Remove any inserted memory cards.
- Insert a USB flash drive as shown.
- After this, all steps are the same as for printing images from memory cards (15 – 16).



- Some USB flash drives may be more difficult than others to insert and remove, and some may not work as expected.
- For instructions, refer to the flash drive user manual.

## Making One Print from a Selected Image

For a convenient way to make a single print of a selected image, follow these steps.



### Choose and print an image.

- Choose an image as described in steps 1 – 4 of “Printing Images” (15).
- Press the <PRINT> button for a single print of the selected image.



- A single print is not produced this way if you follow steps 4 – 5 in “Printing Images” (15) to choose images and the number of prints. To use this method for individual prints, make sure the number of prints is [0] in step 4 on 15 beforehand.

Cover

Contents

Part Names

Basic Operations

Print Settings

Printing via USB Cable

Troubleshooting

Appendix



## Storing Prints

- To remove any extra paper from the edges of a print, fold the paper along the perforations and tear the edges off.
- When writing on prints, use an oil-based pen.
- To prevent discoloration, do not store prints where temperatures exceed 40 °C (104 °F), in humid or dusty places, or in direct sunlight.
- Also avoid the following actions, which may cause discoloration, fading, or bleeding: sticking tape on the printed surface, allowing the printed surface to contact vinyl or plastic, applying alcohol or volatile solvents to the printed surface, or leaving the printed surface pressed firmly against other surfaces or objects over extended periods.
- When storing prints in an album, choose an album with photo covers made of nylon, polypropylene, or cellophane.



- ⓘ • Color may change over time or depending on storage conditions. Canon cannot be held liable for discoloration.

## After Printing

- ① Turn off SELPHY (📖13) and remove any memory cards or USB flash drives.
  - ② Lower the screen for storage.
  - ③ Unplug the power cord from the outlet and disconnect the adapter plug from SELPHY.
    - If the compact power adapter is still warm, wait for it to cool down before putting it away.
  - ④ Remove the paper cassette and close the paper cassette compartment cover. Leave any remaining paper in the cassette, and store the cassette in a dark, cool, and dry place away from dust.
    - Leave the ink cassette in SELPHY.
    - Store SELPHY on a flat surface, away from sunlight and dust. Any dust that gets inside SELPHY may cause white banding on photos or damage the printer.
- 
- ⓘ • Store any extra ink cassettes in the original package or a bag, away from sunlight and dust.
  - Store any unused paper or ink cassettes in their unopened packages, away from sunlight.

Cover

Contents

Part Names

Basic Operations

Print Settings

Printing via USB Cable

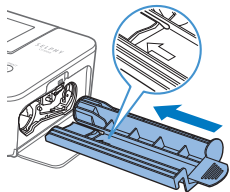
Troubleshooting

Appendix



## Regular Cleaning

If a cleaner unit is included (📖2), you may wish to perform regular cleaning to prevent dust or dirt from causing banding on prints. Note that the cleaner unit is not included in all regions.



### Clean the printer.

- Remove the ink cassette if it is in the printer.
- With the arrow side face-up, slide the cleaner unit all the way in and out of the ink cassette compartment 2 – 3 times.
- Store the cleaner unit in a bag or other container to keep it free of dust.



- Do not touch the white strip on the cleaner. This may affect cleaning performance.
- Do not use other types of cleaners, which may damage the printer.
- If prints are affected by banding even after you use the cleaner unit, contact a Canon Customer Support Help Desk.

Cover

Contents

Part Names

Basic Operations

Print Settings

Printing via USB Cable

Troubleshooting

Appendix



# Print Settings

Explore a variety of printing features in this chapter, such as cropping images, preparing ID photos, and enhancing images.

<b>Printing All Images</b> .....	<b>21</b>
<b>Cropping Images</b> .....	<b>22</b>
<b>Printing ID Photos</b> .....	<b>23</b>
Cropping Images.....	25
<b>Adjusting Settings</b> .....	<b>25</b>
Configuring Settings.....	26
Choosing the Finish (Print Finish).....	26
Printing with a Border around Images (Borders).....	27
Choosing a Layout (Page Layout).....	27

Optimal Prints with Auto Correction (Image Optimize).....	28
Adjusting the Brightness.....	29
Making Skin Look Smooth (Smooth Skin).....	29
Adjusting the Color Tone (My Colors).....	30
Reducing the Appearance of Red-Eye (Correct Red-Eye).....	30
Printing with the Date.....	31
Changing How the Date Is Displayed (Date Format).....	31
Saving Energy (Auto Power Down).....	32
Using ID Photo Printing by Priority (ID Photo Priority).....	32
Using the Same Borders and Page Layout Settings after Turning off the Power (Keep Print Settings).....	32

Cover

Contents

Part Names

Basic Operations

**Print Settings**

Printing via USB Cable

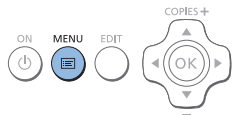
Troubleshooting

Appendix



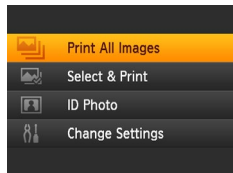
## Printing All Images

Print all images on a memory card at once as follows.



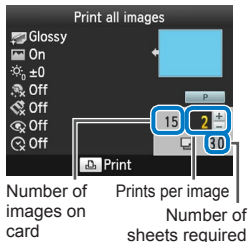
### 1 Access the menu.

- Press the <MENU> button.



### 2 Access the setting screen.

- Press the <▲><▼> buttons to select [Print All Images], and then press the <OK> button.



### 3 Choose the number of prints.

- Press the <▲><▼> buttons to specify the number of prints.

### 4 Print.

- Press the <PRINT> button to start printing.
- To cancel printing, press the <BACK> button.



- If the memory card contains more than 1,000 images, the 999 most recent images are printed, as determined by shooting date.
- You can specify up to 99 prints in step 3. However, the total number of prints cannot exceed 999.  
(For example, you can specify up to nine prints of each image if the card contains 100 images.)

Cover

Contents

Part Names

Basic Operations

Print Settings

Printing via USB Cable

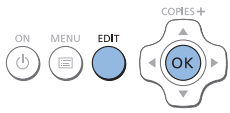
Troubleshooting

Appendix



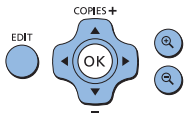
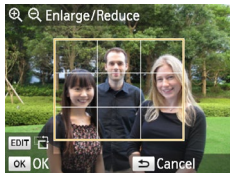
## Cropping Images

Print only selected areas of an image as follows.



### 1 Access the cropping screen.

- Choose an image as described in step 4 of “Printing Images” (15), press the EDIT button, and then press the <OK> button.
- A crop frame is displayed, showing the image area that will be cropped.



### 2 Adjust the image area to crop.

- To switch the crop frame between portrait and landscape orientation, press the EDIT button.
- To move the crop frame, press the <▲><▼><◀><▶> buttons.
- To enlarge the crop frame, press the <Ⓜ> button, and to reduce it, press the <Ⓜ> button.



### 3 Confirm the setting.

- To confirm the cropping area and return to the image display screen, press the <OK> button.
- To crop other images for printing with the first one, repeat steps 1 – 3.

### 4 Print.

- Print as described in step 6 of “Printing Images” (16).
- After printing, crop settings are cleared.



- To adjust the cropping area once you have set it, press the EDIT button on the image display screen, press the <▲><▼> buttons to select [Adjust Cropping], and then press the <OK> button. Repeat steps 2 – 3.
- To cancel cropping after you have set the cropping area, press the EDIT button on the image display screen, press the <▲><▼> buttons to select [Reset Cropping], press the <OK> button to access the reset cropping screen, and then press the <OK> button again.
- Cropping areas you have set are cleared if you turn off SELPHY or remove the memory card before printing.
- You can specify cropping for up to 99 images at once.
- Cropping is not available when printing with [Print All Images] or [DPOF Print] or when [Page Layout] (27) is set to [Index] or [Shuffle].
- The cropping aspect ratio indicated by the frame displayed on images cannot be adjusted.
- To change the number of prints, press the <▲><▼> buttons on the image display screen in step 3. Note that specifying zero prints will not clear cropping settings.

Cover

Contents

Part Names

Basic Operations

Print Settings

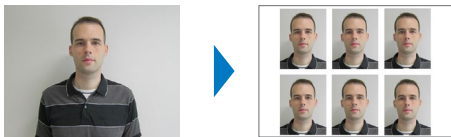
Printing via USB Cable

Troubleshooting

Appendix



## Printing ID Photos



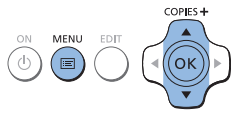
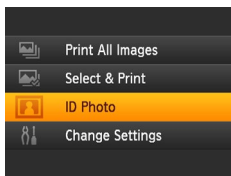
Images can be printed for use in photo identification. Choose from the following three sizes.

<b>[Custom]</b>	Specify the length of the long and short sides, and then print.
<b>[Standard]</b>	Print a photo that complies with the international ICAO standard.
<b>[Dual]</b>	Print two sizes: 50x50 mm (approx. 2.0x2.0 in.) and 45x35 mm (approx. 1.8x1.4 in.).

- With [Custom] and [Standard], two different images can be printed on each sheet.
- The photo may not be accepted as an official ID photo, depending on the intended purpose. For details, contact the institution that requires the photo.

### 1 Specify ID photo printing.

- Press the <EDIT> button.
- Press the <▲><▼> buttons to select [ID Photo], and then press the <OK> button.



### 2 Specify the finished size of the photo.

- Press the <◀><▶> buttons to specify how the size is determined.
- [Custom]: Press the <▲><▼> buttons to select [Long Side], and then press the <◀><▶> buttons to specify the length. Specify the [Short Side] length, and then press the <OK> button again. Note that options available for [Short Side] are automatically updated based on the [Long Side] length.
- [Standard] or [Dual]: Check the indicated image size and press the <OK> button.

### 3 Choose an image to print.

- Press the <◀><▶> buttons to select an image, and then press the <▲> button. ✓ is shown in the lower right (up to two images with [Custom] and [Standard], only one image with [Dual]).
- To specify the cropping area (📖22), press the EDIT button.
- Print as described in step 6 of “Printing Images” (📖16).
- Settings are cleared after printing.

Cover

Contents

Part Names

Basic Operations

Print Settings

Printing via USB Cable

Troubleshooting

Appendix





- Card-size paper cannot be used.
- [Borders] settings are not applied, and dates are not printed.
- Selecting two images in step 3 will produce an equal number of prints of each image per sheet, in your specified layout. Note that for layouts with an odd number of prints per sheet, the center frame on the sheet will be blank.
- The settings in the ID Photo Settings screen (📖23) are retained even when SELPHY is turned off.
- You can set the ID Photo Settings screen (📖23) to display when SELPHY is turned on or a memory card is inserted (📖32).
- Marks are printed in the four corners of each printed image as a guide for cutting out the photo.



## Filtering Candidate Image Sizes

Many image size options are listed when you select [ID Photo] ▶ [Size Selection] ▶ [Custom]. To simplify size selection, you can edit the list to show only sizes used most often.



### 1 Access the setting screen.

- On the ID photo settings screen, choose [Size Selection] ▶ [Custom] (📖23), and then press the EDIT button.

### 2 Select sizes for display.

- To remove a size from the list, press the <▲><▼><◀><▶> buttons to select the size, and then press the <OK> button.
- The check mark (✓) is cleared, and the size will no longer be listed on the [ID Photo Settings] screen (📖23). To include a size in the list, press the <OK> button again to select the size, displaying ✓.
- Pressing the EDIT button clears all ✓. When no sizes are selected, pressing the EDIT button selects all sizes, displaying ✓.
- Once you have selected the sizes to include in the list, press the <↔> button.



- A warning message is displayed if you press the <↔> button when no sizes are selected. Press the <OK> button to return to the [Sizes] screen. Select at least one size to list, and then press the <↔> button.

Cover

Contents

Part Names

Basic Operations

Print Settings

Printing via USB Cable

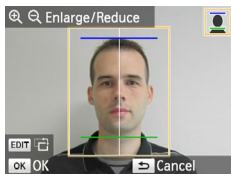
Troubleshooting

Appendix





## Cropping Images



- Two cropping guide lines are displayed when you access the crop frame (📖22) when [Standard] or [Dual] size is selected in [Size Selection] of [ID Photo].
- When [Standard] is selected, to print a photo that conforms to passport standards for face size and position, adjust the crop frame so that one line is above the head and the other is below the chin.
- When [Dual] is selected, two frames with differing sizes are displayed simultaneously.



- For specific requirements other than face size and position, contact the institution that requires the photo.

## Adjusting Settings

You can enhance images in several ways before printing. Add the shooting date, adjust colors, and more. Settings apply to all images, so there is no need to adjust each image individually.

Configurable Items	Description
Print Finish (📖26)	Choose the surface finish of prints.
Borders (📖27)	Print images with or without a border.
Page Layout (📖27)	Choose the number of images per sheet.
Image Optimize (📖28)	Automatically correct images, for optimal quality.
Brightness (📖29)	Adjust image brightness in a range of -3 to +3.
Smooth Skin (📖29)	Make skin appear smooth and beautiful.
My Colors (📖30)	Choose special color tones to make prints look distinctive, or choose sepia or black-and-white prints.
Correct Red-Eye (📖30)	Correct images affected by red-eye.
Date (📖31)	Add camera shooting dates when you print.
Date Format (📖31)	Adjust the date format.
Auto Power Down (📖32)	Specify automatic power-off when the printer is idle.
ID Photo Priority (📖32)	Set the ID Photo Settings screen to be the default display.
Keep Print Settings (📖32)	Retain the [Borders] and [Page Layout] settings even after being turned off.
Language (📖13)	Change the language of menus and messages.

Cover

Contents

Part Names

Basic Operations

Print Settings

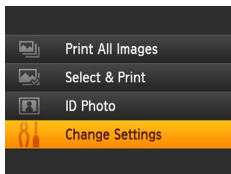
Printing via USB Cable

Troubleshooting

Appendix

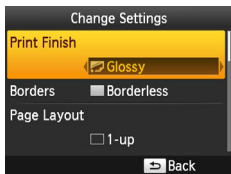
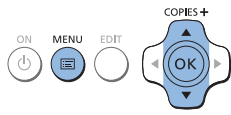


## Configuring Settings



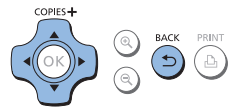
### 1 Access the setting screen.

- Press the <≡> button.
- Press the <▲><▼> buttons to select [Change Settings], and then press the <OK> button.



### 2 Select an item and adjust the setting.

- Press the <▲><▼> buttons to select an item.
- Press the <<▶><◀> buttons to adjust the settings, and then press the <↶> button to confirm your choice.



### 3 Access the image display screen.

- Press the <▲><▼> buttons to select [Select & Print], and then press the <OK> button.
- See [26 – 31](#) for details on each feature.

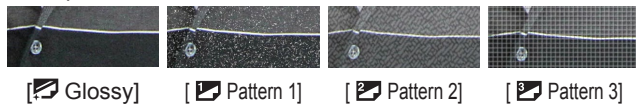
### 4 Print.

- Select the images ([15](#)) and the number of prints ([15](#)), and then press the <≡> button to print.

## Choosing the Finish (Print Finish)



### Example of finish



- By adding a subtle texture to the surface of prints, you can create a less glossy finish.

<b>Glossy (default)</b>	Prints with a glossy surface finish.
<b>Pattern 1</b>	Applies a slightly rough surface pattern, for a less glossy finish.
<b>Pattern 2</b>	Applies a fine surface pattern, for a less glossy finish.
<b>Pattern 3</b>	Applies a fine grid-like surface pattern, for a less glossy finish.



- The surface finish may be less noticeable depending on the printer's internal temperature when you turn it on. Before turning on the printer and printing, wait until it has adjusted to an ambient temperature of 10 – 35 °C (50 – 95 °F).

Cover

Contents

Part Names

Basic Operations

Print Settings

Printing via USB Cable

Troubleshooting

Appendix





- Turning off SELPHY will restore the default setting of [Glossy].

## Printing with a Border around Images (Borders)



- Print images with or without a border.
- Borderless (default) /  Bordered



- Turning off SELPHY will restore the default setting of [ Borderless]. You can have SELPHY retain configured settings (32).
- Images are printed without borders when [Page Layout] (27) is set to [ Index] or [ Shuffle].
- On card-size paper (2), images are printed without borders when [Page Layout] (27) is set to [ 8-up] even if [ Bordered] is selected.

## Choosing a Layout (Page Layout)



- Choose the number of images per sheet. Your specified quantity of prints (15) will be printed in the configured layout.
- With Color Ink / Label Set KC-18IL (8 Labels per Page, 2), specify [ 8-up].

<input type="checkbox"/> 1-up (default)	One image per sheet	<input type="checkbox"/> 8-up	Eight images per sheet
<input type="checkbox"/> 2-up	Two images per sheet	<input type="checkbox"/> Index	Many small, uniform size images per sheet
<input type="checkbox"/> 4-up	Four images per sheet	<input type="checkbox"/> Shuffle	Images in a variety of sizes on a single sheet



- Turning off SELPHY will restore the default setting of [ 1-up]. You can have SELPHY retain configured settings (32).
- The position of images cannot be specified.
- Depending on the configured layout, images may not be printed with the settings in [Date] (31), [Image Optimize] (28), [Correct Red-Eye] (30), [Borders] (27), [Smooth Skin] (29), or [Brightness] (29).
- Carrying out [Print All Images] (21) with [ Index] selected, allows you to print all images on the memory card as an index.

Cover

Contents

Part Names

Basic Operations

Print Settings

Printing via USB Cable

Troubleshooting

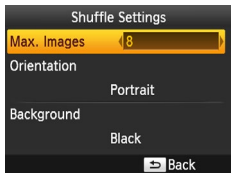
Appendix



## Combining Images of Various Sizes (Shuffle)



- Use the shuffle feature to have images arranged automatically in a variety of sizes.
- Groups of up to 8 or 20 images can be printed on a single sheet.
- Postcard-size paper (📄2) can be used for printing.

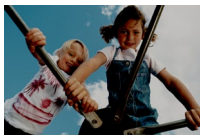


- On the screen in step 2 of “Configuring Settings” (📖26), press the <▲><▼> buttons to select [Page Layout]. Press the <◀><▶> buttons to select [🔄 Shuffle], and then press the <OK> button.
- On the screen on the left, press the <▲><▼> buttons to select an item.
- Press the <◀><▶> buttons to adjust the settings, and then press the <↵> button to confirm your choice.



- The position of images cannot be specified.
- It may take some time before printing begins.

## Optimal Prints with Auto Correction (Image Optimize)



- Automatically correct images, for optimal quality.
- 🖼️ On (default) / 🖼️ Off



- Some images may not be adjusted correctly.



- Turning off SELPHY will restore the default setting of [🖼️ On].
- When [📄 Index] is selected in [Page Layout] (📖27), [Image Optimize] is not applied.
- The degree of correction may vary depending on layout and paper size.

Cover

Contents

Part Names

Basic Operations

Print Settings

Printing via USB Cable

Troubleshooting

Appendix



## Adjusting the Brightness



- Adjust image brightness in a range of -3 to +3.
- Choose larger positive values to make images brighter, or larger negative values to make them darker.



- Turning off SELPHY will restore the default setting of [☞,±0].
- When [☞ Index] is selected in [Page Layout] (27), settings in [Brightness] are not applied.

## Making Skin Look Smooth (Smooth Skin)

- Make skin appear smooth and beautiful.
- ☞ Off (default) / ☞ On



- Correction may be applied to image areas other than skin in some cases, and results may not be as expected.



- The default setting of [☞ Off] is restored after printing, when SELPHY is turned off, or when a memory card is removed.
- When [☞ Index] is selected in [Page Layout] (27), [Smooth Skin] is not applied.

Cover

Contents

Part Names

Basic Operations

Print Settings

Printing via USB Cable

Troubleshooting

Appendix



## Adjusting the Color Tone (My Colors)

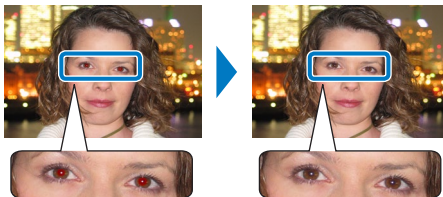
- Choose special color tones to make prints look distinctive, or choose sepia or black-and-white prints.

Off (default)	—	Positive Film	Saturated, natural colors, as produced with positive film
Vivid	Vivid prints with greater contrast and color saturation	Sepia	Sepia-tone
Neutral	Subdued prints with less contrast and color saturation	B/W	Black and white



- Turning off SELPHY will restore the default setting of [ Off].
- Some color options may prevent red-eye correction ([30](#)).

## Reducing the Appearance of Red-Eye (Correct Red-Eye)



- Correct images affected by red-eye.
- Off (default) / On



- Red-eye correction may mistakenly be applied to areas of the image other than the affected eyes. To avoid this, select [ On] only for images affected by red-eye.



- Turning off SELPHY or removing the memory card will restore the default setting of [ Off].
- Red-eye may not be detected or corrected well on faces covering a very large/small area of the screen, on bright/dark faces, in shots from the side of or at an angle to the face, or when part of the face is not visible.
- Red-eye correction is not applied when [Page Layout] ([27](#)) is set to [ 2-up], [ 4-up], [ 8-up], or [ Index].
- Similarly, red-eye correction is not applied when [My Colors] ([30](#)) is set to [ Sepia] or [ B/W].
- The degree of correction may vary depending on cropping, page layout, and paper size.

Cover

Contents

Part Names

Basic Operations

Print Settings

Printing via USB Cable

Troubleshooting

Appendix



## Printing with the Date

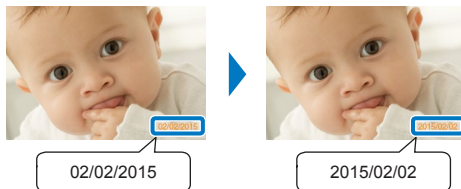


- Add camera shooting dates when you print.
- Off (default) / On

- ! To prevent two instances of the date on images already labeled by the camera, select [ Off].

- Turning off SELPHY will restore the default setting of [ Off].
- The date added to prints cannot be changed, because it is the date assigned by the camera when the photos were taken.
- To change how the date displays, adjust [Date Format] ([31](#)).
- Dates are not printed when [Page Layout] ([27](#)) is set to [ Index] or [ Shuffle].

## Changing How the Date Is Displayed (Date Format)



- When adding the date ([31](#)), adjust the date format as needed.
- dd/mm/yyyy (default), yyyy/mm/dd, or mm/dd/yyyy

- The setting is retained even when SELPHY is turned off or memory cards are removed.

Cover

Contents

Part Names

Basic Operations

Print Settings

Printing via USB Cable

Troubleshooting

Appendix



## Saving Energy (Auto Power Down)

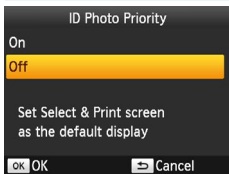
- SELPHY turns off automatically if left idle for about five minutes.
- On (default) / Off



- SELPHY does not turn off automatically when connected to other devices, or when an error message is displayed.
- If an unsupported image is included (📖14) when printing multiple images, [Could not print some images! Cancel printing?] is displayed and printing stops. If this happens, SELPHY does not turn off automatically.

## Using ID Photo Printing by Priority (ID Photo Priority)

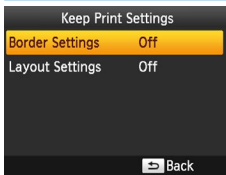
- You can set the ID Photo Settings screen (📖23) to display when SELPHY is turned on, when a memory card is inserted, and after printing.
- When set to [Off], the [Select & Print] screen (📖15) is displayed.
- Off (default) / On



- In the screen in step 2 of “Configuring Settings” (📖26), press the <▲><▼> buttons to select [ID Photo Priority], and then press the <OK> button.
- On the screen on the left, press the <▲><▼> buttons to adjust the settings, and then press the <OK> button to confirm your choice.

## Using the Same Borders and Page Layout Settings after Turning off the Power (Keep Print Settings)

- You can have SELPHY retain the Borders (📖27) and Page Layout (📖27) settings even after being turned off.
- Off (default) / On
- You can set this separately for Borders and Page Layout.



- In the screen in step 2 of “Configuring Settings” (📖26), press the <▲><▼> buttons to select [Keep Print Settings], and then press the <OK> button.
- On the screen on the left, press the <▲><▼> buttons to select [Border Settings] or [Layout Settings], and then press the <OK> button.
- On the screen displayed, press the <▲><▼> buttons to adjust the settings, and then press the <OK> button to confirm your choice.

Cover

Contents

Part Names

Basic Operations

Print Settings

Printing via USB Cable

Troubleshooting

Appendix





# Printing via USB Cable

This chapter describes how to connect a camera or computer via a USB cable for printing.

Cover

Contents

Part Names

Basic Operations

Print Settings

Printing via USB Cable

Troubleshooting

Appendix

<b>Printing from a Computer</b> .....	<b>34</b>
Preparing the Computer.....	34
Printing from a Computer.....	35

<b>Printing from a Camera</b> .....	<b>36</b>
Printing Using Camera Settings (DPOF Print) .....	37



## Printing from a Computer

Here, instructions are given using Windows 7 and Mac OS X 10.8 as an example.

### Preparing the Computer

#### What You Will Need

- A computer with Internet access\*
  - USB cable, 2.5 m (8.2 ft.) or shorter, sold separately (SELPHY port: Mini-B)
- \* In some sales region, a SELPHY CP1000 Solution Disk is included and can be used for printer installation. For details, refer to the "Getting Started" guide.

#### System Requirements

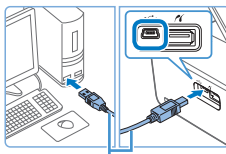
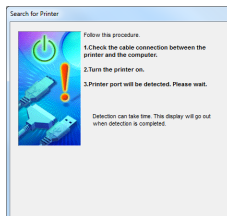
	Windows	Mac OS
OS	Windows 7 SP1 Windows 8.1	Mac OS X 10.8/10.9
Free Disk Space	Approx. 5 MB*	Approx. 7 MB*

\* Space required for printer driver installation. The space required for software operation and printing varies depending on the software and print data.

#### Installing the Printer Driver (Windows)

##### 1 Download the printer driver.

- Connect to the Internet from a computer and access "<http://www.canon.com/icpd/>".
- Select your country/region and follow the instructions displayed to complete the download.



USB cable, sold separately



- Double-click the downloaded file and follow the on-screen instructions.
- If the User Account Control window is displayed, follow the on-screen instructions.

##### 2 When the screen on the left is displayed, prepare the printer and connect it to the computer.

- Turn off SELPHY and remove any inserted memory cards or USB flash drives.
- Insert a loaded paper cassette and an ink cassette in SELPHY (8 – 10).
- Use the USB cable to connect SELPHY to the computer. For instructions, refer to the computer or cable user manual.

##### 3 Turn on the printer to complete the installation process.

- Press the <power> button to turn on SELPHY.
- The printer driver is installed.

Cover

Contents

Part Names

Basic Operations

Print Settings

Printing via USB Cable

Troubleshooting

Appendix



## ■ Installing the Printer Driver (Mac OS)

- Download and install the printer driver following step 1 in "Installing the Printer Driver (Windows)" (📖34).

## ■ Printing from a Computer

### 1 Prepare SELPHY.

- Remove any inserted memory cards or USB flash drives.
- Insert a loaded paper cassette and an ink cassette in SELPHY (📖8 – 10).
- If the printer and computer are not connected yet, turn off the printer momentarily, connect it to the computer via USB (📖34), and then turn on the printer again.

### 2 Access the printing dialog box.

- Start the photo software, select images to print, and access the printing dialog box.
- As the destination printer, select [Canon (SELPHY) CP1000].

### 3 Choose printing options.

- Choose a paper size corresponding to the size of paper and ink cassettes in SELPHY. Also choose bordered or borderless printing as an option with the listed paper sizes.
- Choose the printing orientation and number of copies, as desired.

### 4 Print.

- ⚠ Printing in progress cannot be canceled from SELPHY by using the <↩> button. To cancel printing, use the computer to delete the print job.
- The printer may not work correctly if it is connected to a computer via a USB hub.
- Avoid allowing your computer to enter sleep or standby mode while the printer is connected via USB. If the computer enters standby mode with the printer connected via USB, wake the computer without disconnecting the USB cable. If recovery fails, restart the computer.
- For computer or photo software instructions, refer to the relevant user manual.

Cover

Contents

Part Names

Basic Operations

Print Settings

Printing via USB Cable

Troubleshooting

Appendix



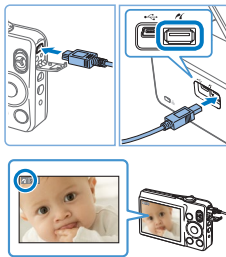


- If an error message is displayed on SELPHY, also check for any error messages displayed on the computer (in desktop mode). Messages will be automatically dismissed once you resolve the issue indicated.
- If a message is displayed on the computer, you can also click [Cancel] to cancel printing.
- Mac OS: If [Canon CP1000] is not available as a destination printer, register the printer on the computer as follows.
  - ① Access [Printers & Scanners] from [System Preferences].
  - ② Click [+] below the list.
  - ③ Choose [Canon CP1000].
  - ④ Click [Add].

## Printing from a Camera

By connecting a PictBridge-compatible camera, you can choose images with the camera and print.

Here, printing instructions are given using a Canon compact digital camera as an example. If your camera is operated differently, refer to the camera user manual.



### 1 Prepare SELPHY.

- Confirm that no memory cards are inserted in SELPHY.

### 2 Connect SELPHY to the camera using the USB cable (📖34).

### 3 Turn on SELPHY and then the camera, and enter Playback mode.

- Some cameras will display a  icon.

### 4 On the camera, choose images and prepare to print.

- Use the camera to start printing.
- After printing, turn off SELPHY and the camera and disconnect the cable.

Cover

Contents

Part Names

Basic Operations

Print Settings

Printing via USB Cable

Troubleshooting

Appendix





- Printing in progress cannot be canceled from SELPHY by using the <↩> button. Use the camera to stop printing.
- This product uses PictBridge technology to print via USB. PictBridge technical standards facilitate direct connection of cameras, printers, and other devices for easy printing.

## Printing Using Camera Settings (DPOF Print)

Inserting a memory card with DPOF information configured on a camera will display [DPOF images remain / Print images?]. To review the printing information set on the camera, press the <OK> button, and to print all designated images at once, press the <🖨️> button.



- For instructions on configuring DPOF information, refer to the camera user manual.
- Dates and file numbers are DPOF information set on the camera that cannot be changed on SELPHY.
- Images prepared with a [Print Type] of [Standard] on Canon cameras are printed according to the settings in "Adjusting Settings" (📖25 – 31).
- You can also review the printing information set on the camera by pressing the <📄> button, selecting [DPOF Print], and pressing the <OK> button. However, [DPOF Print] is only displayed when a camera-configured memory card is inserted.

Cover

Contents

Part Names

Basic Operations

Print Settings

Printing via USB Cable

Troubleshooting

Appendix



# Troubleshooting

Refer to these troubleshooting tips to resolve problems with SELPHY. If the problem persists, contact a Canon Customer Support Help Desk.

Cover

Contents

Part Names

Basic Operations

Print Settings

Printing via USB Cable

**Troubleshooting**

Appendix

Power.....	39
Screen.....	39
Printing.....	39

Paper.....	40
Error Messages.....	41



## Power

### Cannot turn on SELPHY

- Confirm that the power cord is connected and plugged in correctly (📖12).
- Hold the <⏻> button until the startup screen is displayed (📖13).
- When using Battery Pack NB-CP2L (sold separately), confirm that the battery pack is charged and inserted correctly, and that the cable is connected correctly.

## Screen

### The image display screen is not displayed (📖32)

- While the ID Photo Settings screen is displayed, press <☰> to display the menu, press <▲><▼> to choose [Select & Print], and then press <OK>.

## Printing

### Cannot print

- Confirm that SELPHY is on (📖13).
- Confirm that the paper and ink cassettes are loaded correctly (📖10).
- Confirm that the ink sheet is not loose (📖8).
- Confirm that you are using paper designed especially for SELPHY (📖10).
- Replace the ink cassette and refill the paper cassette as needed (📖16).
- Confirm that you are using the correct combination of paper, paper cassette, and ink cassette (📖8).
- SELPHY will temporarily halt printing if it exceeds a specific temperature; this does not indicate a problem. Wait until the printer cools off. During continuous printing, in hot environments, or if the printer's interior becomes hot because the rear-side air vent (📖5) is blocked, SELPHY may temporarily stop printing, causing printing to take longer.

### Cannot display or print images on memory cards or USB flash drives

- Confirm that the memory card is fully inserted in the correct slot, with the label face-up (📖14, 15).
- Confirm that the USB flash drive is fully inserted, right-side up (📖17).
- Confirm that the image format is supported (📖14).
- Confirm that a memory card requiring the use of an adapter has not been inserted without its adapter (📖14).

### Cannot print from a camera

- Confirm that your camera supports PictBridge (📖36).
- Confirm that SELPHY and the camera are connected correctly (📖36).
- Confirm that your camera batteries have enough charge left. If the batteries are depleted, replace them with fully charged or new ones.
- Remove any inserted memory cards or USB flash drives.

Cover

Contents

Part Names

Basic Operations

Print Settings

Printing via USB Cable

Troubleshooting

Appendix



## Cannot print from a computer

- Confirm that you have installed the printer driver correctly (📖34).
- Remove any inserted memory cards or USB flash drives.
- When printing via USB, confirm that SELPHY is connected directly to the computer with the USB cable (📖34).
- Windows: Confirm that the printer is not offline. If so, right-click the printer icon and bring the printer online.
- Mac OS: Confirm that you have added SELPHY to the Printer List (📖36).

## No date when printing from memory cards or USB flash drives

- Confirm that SELPHY is set up to print the date (📖31).  
Note that in DPOF printing, date printing is configured on the camera.

## No date when printing from cameras

- Confirm that the date setting is enabled on the camera. Note that under standard camera settings, the date setting on SELPHY will be used.

## Print quality is poor

- Confirm that the ink sheet and paper are free of dirt or dust.
- Confirm that SELPHY's interior is free of dust (📖46).
- Confirm that no condensation has formed on SELPHY (📖46).
- Confirm that SELPHY is away from sources of electromagnetic waves or strong magnetic fields (📖12).

## Printed colors do not match on-screen colors

- Computer monitors employ a different method of color development from printers. Colors may also look different depending on the intensity and color temperature of lighting in the monitor viewing environment, as well as monitor color calibration.

## Individual images are printed reduced, in only one layout position

- Change the [Page Layout] settings (📖27). When a layout in [Page Layout] other than [1-up] is selected, individual images are printed in one layout position per sheet if you print from a camera or other device that can only send one image at a time.

## Paper

### Paper does not fit in the cassette

- Confirm that the paper is the same size as the paper cassette (📖2).

### Paper feed problems or frequent paper jams occur

- Confirm that the paper and cassette are inserted correctly (📖9, 10).
- Confirm that there are less than 19 sheets in the cassette.
- Confirm that 19 or more prints have not collected on the paper cassette.
- Confirm that you are using paper designed especially for SELPHY (📖10).

### Cannot print the correct quantity (unused paper left after ink runs out)

- Some unused paper may remain if the ink runs out first (📖17).

### Paper jams

- If paper protrudes from the front or back paper ejection slot (📖5), carefully pull it out. If you cannot remove the paper by gently pulling it out, never force it out. Turn the printer off and then on. Repeat until the paper is ejected. If you accidentally turn the printer off while printing, restart it and wait until the paper is ejected. If paper jams and cannot be removed, contact your retailer or a Canon Customer Support Help Desk. Do not attempt to remove jammed paper by force, which may damage the printer.

Cover

Contents

Part Names

Basic Operations

Print Settings

Printing via USB Cable

Troubleshooting

Appendix





## Error Messages

Error messages indicate problems with SELPHY. When error messages include troubleshooting tips, follow the instructions. If only an error message is displayed, follow the suggestions in “Troubleshooting” (38).

If the problem persists, contact a Canon Customer Support Help Desk.



- If a problem occurs while SELPHY is connected to a camera, an error message may also be displayed on the camera. Check both SELPHY and the camera.

Cover

Contents

Part Names

Basic Operations

Print Settings

Printing via USB Cable

Troubleshooting

Appendix



# Appendix

Instructions for battery-powered printing with an optional battery pack are given here, along with printer specifications and handling and maintenance tips.

Cover

Contents

Part Names

Basic Operations

Print Settings

Printing via USB Cable

Troubleshooting

Appendix

<b>Printing without a Power Outlet</b> .....	<b>43</b>
Attaching the Battery Pack.....	43
Charging the Battery to Use SELPHY.....	43

<b>Specifications</b> .....	<b>44</b>
<b>Handling and Maintenance</b> .....	<b>46</b>

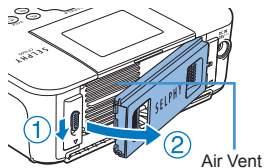


## Printing without a Power Outlet

To print where no power outlet is available, use Battery Pack NB-CP2L (sold separately). On a full charge, up to about 36 sheets\* of postcard-size paper can be printed.

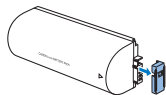
\* According to Canon testing. May vary depending on printing conditions.

## Attaching the Battery Pack

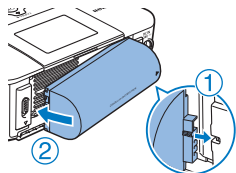


### 1 Remove the battery pack mounting cover.

- With the switch held in the direction of the arrow (①), move the cover in the direction of the arrow (②) to remove.



### 2 Remove the battery terminal cover.



### 3 Attach the battery pack.

- Slide the terminal-end in the direction of the arrow (①) and insert the other end (②) until it clicks into place.

## Charging the Battery to Use SELPHY

- Once SELPHY is connected to a power outlet (📖12), charging starts and [🔋] blinks on the screen.
- When charging is finished in about four hours (at room temperature), [🔋] will no longer be displayed.
- SELPHY can be turned on for use even while [🔋] is blinking (📖12). However, charging will then stop. When power is turned off, [🔋] blinks and charging resumes.



- For battery precautions, refer to the battery user manual.
- When [🔋] is displayed, place SELPHY in an environment at operating temperature (📖44), and charge once it has adjusted to the ambient temperature.
- When [🔋] is displayed, press and hold any button other than <⏻> for 3 seconds or more to clear [🔋]. To check if the battery is still charging, you can press any button other than <⏻>, and [🔋] will appear for around 10 seconds.
- When [🔋X] is displayed in red, the battery has reached the end of its life. Please purchase a new battery.

Cover

Contents

Part Names

Basic Operations

Print Settings

Printing via USB Cable

Troubleshooting

Appendix



# Specifications

<b>Printing Method</b>	Dye-sublimation thermal transfer (with overcoating)		
<b>Resolution</b>	300 x 300 dpi		
<b>Gradation</b>	256 shades per color		
<b>Ink</b>	Dedicated color ink (Y/M/C/overcoating)		
<b>Paper</b>	Postcard and card size (including full-page label, 8 labels per sheet configuration, square labels)		
<b>Print Size</b>	<b>Borderless</b>	<b>Bordered</b>	
	Postcard	100.0 x 148.0 mm (3.94 x 5.83 in.)	91.3 x 121.7 mm (3.59 x 4.79 in.)
	Card	54.0 x 86.0 mm (2.13 x 3.39 in.)	49.9 x 66.6 mm (1.96 x 2.62 in.)
	Label on 8-label sheet	22.0 x 17.3 mm (0.87 x 0.68 in.)	–
Square labels	50.0 x 50.0 mm (1.97 x 1.97 in.)	–	
<b>Printing Speed</b> <sup>*1</sup>	<b>Printing speed when a memory card or USB flash drive is inserted, or when a camera is connected (PictBridge) (time in parentheses applies to [Pattern 1], [Pattern 2], or [Pattern 3] in [Print Finish])</b>		
	Postcard	Approx. 47 sec.	(Approx. 58 sec.)
Card	Approx. 27 sec.	(Approx. 32 sec.)	
<b>Feeding System</b>	Auto feeding from paper cassette		
<b>Ejection System</b>	Auto ejection onto paper cassette		
<b>Screen</b>	Tilting 6.8 cm (2.7 in.) TFT LCD color monitor		

## Interfaces

Hi-Speed USB	Type A port for PictBridge-compatible devices Mini-B port for computers
Memory Cards	SD, SDHC, SDXC, miniSD <sup>2</sup> , miniSDHC <sup>2</sup> , microSD <sup>2</sup> , microSDHC <sup>2</sup> , microSDXC <sup>2</sup> , CF, Microdrive and xD-Picture Card <sup>2</sup>

## USB Flash Drives

FAT or exFAT format only

## Operating Temperature

5 – 40 °C (41 – 104 °F)

## Operating Humidity

20 – 80 %

## Power

Compact Power Adapter CA-CP200 B  
Battery Pack NB-CP2L (sold separately)

## Power Consumption

60 W or less (standby: 4 W or less)

## Dimensions

178.0 x 135.0 x 60.5 mm (7.01 x 5.31 x 2.38 in.) excluding protrusions

## Weight (printer body only)

Approx. 840 g (1.85 lb.)

\*1 From the initial yellow printing pass until ejection.

\*2 Requires an optional dedicated adapter.

Cover

Contents

Part Names

Basic Operations

Print Settings

Printing via USB Cable

Troubleshooting

Appendix



## ■ Compact Power Adapter CA-CP200 B

<b>Rated Input</b>	100 – 240 V AC (50/60 Hz), 1.0 A (100 V) – 0.6 A (240 V)
<b>Rated Output</b>	24 V DC, 1.8 A
<b>Operating Temperature</b>	0 – 40°C (32 – 104°F)
<b>Dimensions</b>	134.0 × 67.5 × 34.0 mm (5.28 x 2.66 x 1.34 in.) excluding power cord
<b>Weight</b>	Approx. 275 g (9.70 oz.)

## ■ Battery Pack NB-CP2L (Sold Separately)

<b>Type</b>	Rechargeable lithium-ion battery
<b>Nominal Voltage</b>	22.2 V DC
<b>Nominal Capacity</b>	1200 mAh
<b>Charging Cycles</b>	Approx. 300 times
<b>Operating Temperature</b>	5 – 40°C (41 – 104°F)
<b>Dimensions</b>	110.0 x 40.7 x 37.5 mm (4.33 x 1.60 x 1.48 in.)
<b>Weight</b>	Approx. 245 g (8.64 oz.)

- All data is based on tests by Canon.
- Printer specifications or appearance are subject to change without notice.

### CAUTION

RISK OF EXPLOSION IF BATTERY IS REPLACED BY AN INCORRECT TYPE.  
DISPOSE OF USED BATTERIES ACCORDING TO LOCAL REGULATION.

### Use of genuine Canon accessories and consumables is recommended.

This product is designed to achieve excellent performance when used with genuine Canon accessories and consumables. Canon shall not be liable for any damage to this product and/or accidents such as fire, etc., caused by the malfunction of non-genuine Canon accessories (e.g., a leakage and/ or explosion of a battery pack). Canon's commercial warranty (where offered) does not cover the damage caused by the use of any non-genuine accessories or consumables.

Cover

Contents

Part Names

Basic Operations

Print Settings

Printing via USB Cable

Troubleshooting

Appendix



## Handling and Maintenance

- Do not subject the printer to excessive force, which may damage the printer or cause paper jams.
- Do not expose the printer to insecticides or other volatile substances. Additionally, do not store the printer in contact with rubber, vinyl, or plastic products over extended periods, which may deteriorate the casing.
- Avoid condensation on the printer, which may happen when moving the printer from cold to warm environments. Put the printer in a sealed plastic bag and allow it to adjust to the new temperature before removing the bag. If condensation forms, allow the printer to dry naturally at room temperature before using again.
- When the printer becomes dirty, wipe it with a soft, dry cloth.
- If the air vent (15) becomes dusty, remove the ink cassette (16) before wiping the dust away, to prevent dust from getting inside and affecting print quality.



- Never wipe the printer with solvents, such as benzene or thinner, or neutral detergent, which may cause deformation or peeling of the casing.

## Trademarks and Licenses

- Microsoft and Windows are trademarks or registered trademarks of Microsoft Corporation in the United States and/or other countries.
- Macintosh and Mac OS are trademarks of Apple Inc., registered in the U.S. and other countries.
- The SDXC logo is a trademark of SD-3C, LLC.
- All other trademarks are the property of their respective owners.
- This device incorporates exFAT technology licensed from Microsoft.
- Portions of the code used in the firmware are based in part on the work of the Independent JPEG Group.

## Disclaimer

- Reprinting, transmitting, or storing in a retrieval system any part of this guide without the permission of Canon is prohibited.
- Canon reserves the right to change the contents of this guide at any time without prior notice.
- Illustrations and screenshots in this guide may differ slightly from the actual equipment.
- The above items notwithstanding, Canon accepts no liability for damages due to mistaken operation of the products.

Cover

Contents

Part Names

Basic Operations

Print Settings

Printing via USB Cable

Troubleshooting

Appendix

