

Car



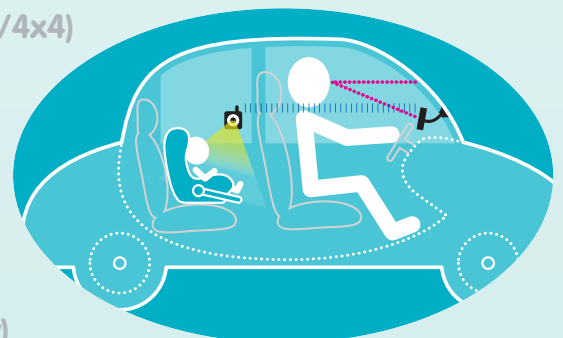
STAY SAFE
KEEP AN EYE ON
YOUR BABY AND
ON THE ROAD

BACK SEAT BABY CAMERA MONITORING SYSTEM

In-car wireless camera and companion screen

Allows mums and dads to see their baby in the back seat whilst driving, without the risk of turning round.

- View your baby on the back seat (or third row seat in an MPV/4x4)
- Very easy to set up and use
- Exceptional picture quality with night vision feature
- Interference free, unlike similar products
- Stay in control and stay safe
- Constant reassurance that baby is safe and well
- Suitable for use at home (home chargers available separately)



babyCam Car

by **Storage Options**

Accessories & support available at storageoptions.com

Specifications

Wireless Camera

- Pixel Image: 640 x 480
- Power Consumption: 250mA±15mA
- Transmission Frequency: 2400MHz~2480MHz
- Sensor: 1/4" CMOS
- Lens: f = 3.7mm
- Minimum Illumination: 1.5 LUX
- Bandwidth: 4Mbps
- Night Vision Range: 3-5m
- Battery: Li battery
- Battery Working Time: 4 hours
- Frame: 22fps
- Power Supply: DC 5V / 1000mA
- Transmission Power: 17dBm
- Operating Temperature: 0°C ~ 50°C
- Humidity: 20%~80%RH
- Material: ABS Plastic

Wireless Screen

- Horizontal Resolution: 360 TV Lines
- Battery: Li battery
- Frame: 22fps
- LCD Screen Type: 3.5" TFT-LCD
- LCD Effective Pixels: 320 x 240
- Receiving Sensitivity: -85dBm
- Colour Configuration: R.G.B.
- Power Supply: DC 5V / 1000mA
- Power Consumption: 280mA±15mA
- Operating Temperature: 0°C ~ 50°C
- Humidity: 20%~80%RH
- Material: ABS Plastic



Turning around to look in the back seat whilst driving might mean that you cannot maintain control of your vehicle. But if you're on your own with your baby and are concerned something is wrong you may feel you have no choice...

babyCam Car offers a simple, easy to use solution to this problem. A compact wireless camera affixes to the side window to get a clear view of your baby and to transmit a video picture. This is received by a wireless display, fixed to the windscreen much like a sat nav, to view whilst driving. No more turning round or looking over your shoulder, get the reassurance that you need and stay in control of your vehicle.

Easy to use

Step 1: Fix the camera to the side window and switch on. (Make sure baby is comfortable as normal!!)

Step 2: Sit down in the driver's seat and fix the display to the windscreen.

Step 3: Switch on the display and almost immediately you'll see a live picture of your baby. Drive safe!

What's inside

1x wireless camera, 1x wireless screen, 1x camera suction mount, 1x screen suction mount, 2x car power adapters, 1x in-car dual-power splitter, instruction manual.



Night vision



Built-in rechargeable battery



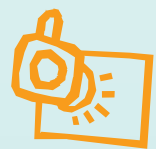
In-car power adapters included



Up to 100m range - also suitable for home use



Wireless camera and screen



Suction window mounts